



# 48th International Diagnostic Course Davos Excellence in Teaching



## **Diseases of the Brain, Head and Neck, Spine**

**April 3 – 8, 2016  
Davos, Switzerland**

### **An Interactive Course in Diagnostic Imaging**

Nuclear Medicine Satellite Course “Diamond”: April 2–3, 2016  
Pediatric Radiology Satellite Course “Kangaroo”: April 2, 2016  
Breast Imaging Satellite Course “Pearl”: April 2, 2016



Visit our stand at the IDKD in Davos  
April 05 – 08, 2016

**frohberg**  
Klinik • Wissen • Managen



The International  
Diagnostic Course  
in Davos, IDKD,  
is an organ-based  
annual postgraduate  
course with a yearly  
changing topic.

Front cover: Ernst Ludwig Kirchner,  
E. L. Kirchner, Mountain Forest 1918–20, Oil on canvas  
Kirchner Museum Davos, [www.kirchnermuseum.ch](http://www.kirchnermuseum.ch)  
Gift of Bruhin-Valtin

## Table of Contents

<b>General Concept and Course Objectives</b>	<b>2</b>
<b>Organization</b>	<b>4</b>
<b>Faculty Addresses</b>	<b>5</b>
<b>Scientific Program IDKD Course</b>	
– Lectures	10
– Workshops	12
<b>Program Overview</b>	<b>14</b>
<b>Scientific Program Satellite Courses</b>	
– Satellite Course “Diamond”	16
– Satellite Course “Kangaroo”	17
– Satellite Course “Pearl”	17
<b>Registration Fees</b>	<b>18</b>
<b>Payment – Cancellation</b>	<b>19</b>
<b>CME Accreditation</b>	<b>20</b>
<b>General Information</b>	<b>22</b>
<b>Travel Arrangements</b>	<b>23</b>
<b>Social Program</b>	<b>24</b>
<b>Local Information Davos</b>	<b>25</b>
<b>Acknowledgements</b>	<b>26</b>
<b>Future IDKD Courses</b>	<b>26</b>

## General Concept and Course Objectives

The course objectives are to review and discuss effective approaches to diagnosis and specific interventions in neuroradiology.

### Workshops

The participants will attend 20 of 21 different workshops covering the medical imaging approach to the diagnosis of the diseases of the brain, head and neck, spine. The instruction is in groups of approximately 50–60 participants. During workshops, participants first get a brief introduction to the subject and then study case material prepared by the instructors.

The participants are encouraged to bring their own laptop (PC or Mac) for case viewing and will get the relevant case files on a USB stick. For participants not bringing their own laptop, classrooms will be equipped with a sufficient number of computers for individual viewing of the cases in small groups of 3 participants (an extra fee will be charged). The case viewing is supported by a special software, uniquely developed for IDKD and drawing from the extensive expertise with electronic teaching.

Finally, the instructors guide through the cases, discuss different diagnoses, present additional material and ask pertinent questions to the participants, thus allowing active interaction.

### Lectures on “Hot Topics” and Diagnostic Dilemmas

The Rüttimann Lecture is presented on Sunday. Highlight and Special lectures presented daily by experts on “hot topics”, new developments or

political issues in radiology and associated sciences including interventional techniques will complete the educational program.

### Film Reading Panel

A diagnostic competition open to all participants and teachers, based on selected cases with answers. Quiz answers need to be handed in at the Quiz Corner by **Wednesday noon** prior to the Film Reading Panel.

Prizes will be awarded to the participants with the best answers. We believe, that answering the quiz is an individual accomplishment and therefore reserve the right to exclude very similar answers from the competition.

### Course Syllabus

The Syllabus containing the condensed version of the presented workshops is included in the registration fee. IDKD participants will receive a printed version as well as the file on their USB stick.

### IDKD online cases

IDKD offers access to two well-documented cases per teacher in the IDKD online database. Each participant will be able to access the database with their IDKD user name and password.

### IDKD on the Internet

Information about IDKD activities is constantly updated. Please visit our website at

[www.idkd.org](http://www.idkd.org)

### Exhibition

Booths of selected imaging industries and one bookseller.

### Course and Teacher Evaluation

The IDKD is continuously investing in organization, e-facilities and teaching. To help us refine and improve the level of the International Diagnostic Course Davos, the organizers would greatly appreciate your taking a few moments to complete the course evaluation.

The USB sticks will contain a link to online evaluation forms for workshops, lectures, and courses in general.

### Satellite Courses

#### Nuclear Medicine Satellite Course “Diamond”

6 workshops on Nuclear Medicine. IDKD Highlight Lectures on Sunday, April 3, are part of the Nuclear Medicine Satellite Course program.

#### Pediatric Radiology Satellite Course “Kangaroo”

4 workshops on specific aspects of Pediatric Imaging.

#### Breast Imaging Satellite Course “Pearl”

4 workshops and a Highlight Lecture on specific aspects of Breast Imaging.



### CME Credits:

see also page 20

### IDKD Course:

EACCME:

35 hours of European external CME credits

Swiss Society of Radiology:

42 category 1 points

For participants from Germany: Academy for Continuing Medical Education in Radiology:

35 CME-points, category 1

### Nuclear Medicine Course “Diamond”:

EACCME:

9 hours of European external CME credits

Swiss Society of Radiology:

11 category 1 points

Swiss Society of Nuclear Medicine:

10 category 1 points

This event is under the auspices of EANM

### Pediatric Radiology Course “Kangaroo”:

EACCME:

6 hours of European external CME credits

Swiss Society of Radiology:

6 category 1 points

Swiss Society of Pediatric Radiology:

6 CME 1 points

### Breast Imaging Course “Pearl”:

EACCME:

6 hours of European external

CME credits

Swiss Society of Radiology:

6 category 1 points

Swiss Society of Gynecology and Obstetrics:

7 points

### International Diagnostic Course Davos

#### Course Directors

Jürg Hodler, Zurich  
Rahel A. Kubik-Huch, Baden  
Gustav K. von Schulthess, Zurich

#### International Advisor

Elmar M. Merkle, Basel

#### Satellite Course Advisors

Thierry A. G. M. Huisman, Baltimore, MD, USA  
(Pediatric Radiology)  
Rahel A. Kubik-Huch, Baden  
(Breast Imaging)  
Gustav K. von Schulthess, Zurich  
(Nuclear Medicine)

#### Neuro Advisors

Frederik Barkhof, NL  
Walter Kucharczyk, CA

#### Online Case Editor

Fabian Morsbach, Zurich

#### Course Management

Maria Tsiplakova Vögeli



### Foundation for the Advancement of Education in Medical Radiology

#### Chairman

Christoph Schmid, Zurich

#### Members

Thomas Kehl, Davos-Clavadel  
Brigit Läubli, Zurich  
Walter Weder, Zurich  
Christoph L. Zollikofer, Kilchberg (Zurich)

## B

### Frederik Barkhof, MD

VU Medical Center  
Department of Radiology and Nuclear Medicine  
NL-1007 MB Amsterdam  
f.barkhof@vumc.nl

### Timothy Beale, MD

University College Hospital London  
Department of Radiology  
GB-NW1 2BU London  
timbeale@fastmail.fm

### Michael Brant-Zawadzki, MD

Hoag Hospital  
US-92658 Newport Beach, CA  
mbrant@hoaghospital.org

### Jens Bremerich, MD

University of Basel Hospital  
Department of Radiology and Nuclear Medicine  
CH-4031 Basel  
jens.bremerich@usb.ch

### Patrick A. Brouwer, MD

Karolinska University  
Dept. of Interventional Neuroradiology  
SE-171 76 Stockholm  
inrnnn@gmail.com

### James V. Byrne, MD

John Radcliffe Hospital, University of Oxford  
Department of Neuroradiology  
GB-OX3 9DU Oxford  
james.byrne@nds.ox.ac.uk

## C

### Jan W. Casselman, MD

AZ St-Jan Brugge AV  
Department of Radiology  
BE-8000 Brugge  
jan.casselmann@azsintjan.be

### W. Kling Chong, MD

Great Ormond Street Hospital for Children  
Department of Radiology  
GB-WC1N 3JH London  
Kling.Chong@gosh.nhs.uk

### Hugh D. Curtin, MD

Massachusetts Eye and Ear Infirmary  
Department of Radiology  
US-02114 Boston, MA  
hugh\_curtin@meei.harvard.edu

## D

### Philippe Demaerel, MD

University Hospital K. U. Leuven  
Department of Radiology  
BE-3000 Leuven  
Philippe.Demaerel@uzleuven.be

### Diederik W.J. Dippel, MD

Erasmus MC University Medical Center Rotterdam  
Department of Neurology  
NL-3000 CA Rotterdam  
d.dippel@erasmusmc.nl

### Alexander Drzezga, MD

University Hospital of Cologne  
Department of Nuclear Medicine  
DE-50937 Cologne  
alexander.drzezga@uk-koeln.de

## Faculty Addresses

### E

#### **Marco Essig, MD**

University of Manitoba  
Winnipeg Regional Health Authority  
Department of Radiology  
CA-R3A 1R9 Winnipeg, MB  
messig@exchange.hsc.mb.ca

### F

#### **Girish M. Fatterpekar, MD**

NYU Langone Medical Center  
Section of Neuroradiology  
US-10016 New York, NY  
girish.fatterpekar@nyumc.org

#### **Adam E. Flanders, MD**

Thomas Jefferson University Hospital  
Department of Radiology  
US-19107-5244 Philadelphia, PA  
adam.flanders@jefferson.edu

### G

#### **Jan Gralla, MD**

Insel Bern University Hospital  
Department of Diagnostic and Interventional  
Radiology  
CH-3010 Bern  
jan.gralla@insel.ch

#### **P. Ellen Grant, MD**

Boston Children's Hospital  
Department of Radiology  
US-02115 Boston, MA  
ellen.grant@childrens.harvard.edu

### H

#### **John R. Hesselink, MD**

UCSD Medical Center  
Department of Radiology  
US-92103-8749 San Diego, CA  
jhesselink@ucsd.edu

#### **Jenny Hoang, MD**

Duke University School of Medicine  
Department of Neuroradiology  
US-27705 Durham, NC  
jennykh@gmail.com

#### **Christoph Hock, MD**

University of Zurich  
Vice-Rector Medicine and Natural Sciences  
CH-8001 Zurich  
prorektor@mnw.uzh.ch

#### **Thierry A. G. M. Huisman, MD**

Johns Hopkins Hospital  
Division of Pediatric Radiology  
US-21287 Baltimore, MD  
thuisma1@jhmi.edu

#### **Martin Hüllner, MD**

University Hospital Zurich  
Clinic of Nuclear Medicine  
CH-8091 Zurich  
martin.huellner@usz.ch

### J

#### **Rolf Jaeger, MD**

The National Hospital for Neurology and  
Neurosurgery  
and University College Hospital (UCH)  
Institute of Neurology  
GB-WC1N 3BG London  
r.jager@ucl.ac.uk

#### **Mary E. Jensen, MD**

University of Virginia Health System  
Department of Radiology  
US-Charlottesville, VA 22908  
mej4u@virginia.edu

### K

#### **Edmond A. Knopp, MD**

Zwanger-Pesiri Radiology  
US-11757 Lindenhurst, NY  
eknopp@zwangerpesiri.com

#### **Kelly K. Koeller, MD**

Mayo Clinic  
Department of Radiology  
US-55905 Rochester, MN  
Koeller.Kelly@mayo.edu

#### **Timo Krings, MD**

Toronto Western Hospital &  
University Health Network  
Department of Medical Imaging and Surgery  
CA-M5T 2S8 Toronto, ON  
timo.krings@uhn.on.ca

#### **Walter Kucharczyk, MD**

University of Toronto  
Department of Medical Imaging  
CA-M5S 1A8 Toronto, ON  
w.kucharczyk@utoronto.ca

### L

#### **Ian Law, MD**

The Copenhagen University Hospital  
Department of Clinical Physiology,  
Nuclear Medicine, & PET  
DK-2100 Copenhagen  
ilaw@pet.rh.dk

### M

#### **Martin G. Mack, MD**

Radiologie München  
Diagnostic Radiology  
DE-80331 Munich  
m.mack@radiologie-muenchen.de

#### **Pia Maly Sundgren, MD**

Lund University  
Center for Medical Imaging and Physiology  
Department of Diagnostic Radiology,  
Clinical Sciences  
Skåne University Hospital  
SE-221 85 Lund  
pia.sundgren@med.lu.se

#### **Michael J. Michell, MD**

King's Breast Radiology and  
National Training Centre  
King's College Hospital Foundation Trust  
GB-SE5 9RS, London  
michael.michell@nhs.net

#### **David J. Mikulis, MD**

The University of Toronto  
The University Health Network  
The Toronto Western Hospital  
Department of Medical Imaging  
CA-M5T 2S8 Toronto, ON  
mikulis@mac.com

#### **Michael T. Modic, MD**

Cleveland Clinic Lerner College of Medicine  
Neurological Institute  
US-44195 Cleveland, OH  
modicm1@ccf.org

#### **Elizabeth A. Morris, MD**

Memorial Sloan-Kettering Cancer Center  
Breast Imaging Service  
US-10065 New York, NY  
morrise@mskcc.org

#### **Alexander Munding, MD**

Marienhospital Osnabrück  
Radiology Clinic  
DE-49074 Osnabrück  
alexander.munding@mho.de

## Faculty Addresses

### N

#### **Daniel Nanz, PhD**

University Hospital Zurich  
Institute for Diagnostic and Interventional  
Radiology  
CH-8091 Zurich  
daniel.nanz@usz.ch

### P

#### **Paul M. Parizel, MD**

University Hospital Antwerp  
Department of Radiology  
BE-2650 Antwerp  
paul.parizel@uza.be

#### **C. Douglas Phillips, MD**

Weill Cornell Medical College  
New York – Presbyterian Hospital  
Department of Radiology  
US-10065 New York, NY  
dphillips@med.cornell.edu

#### **John Prior, MD**

University Hospital of the Canton  
of Vaud (CHUV)  
Nuclear Medicine and Molecular Imaging  
CH-1011 Lausanne  
john.prior@chuv.ch

### R

#### **Luca Regli, MD**

University Hospital Zurich  
Neurosurgery Clinic  
CH-8091 Zürich  
luca.regli@usz.ch

#### **Jeffrey S. Ross, MD**

Mayo Clinic Arizona  
Department of Radiology  
Division of Neuroradiology  
US-85054 Phoenix, AZ  
jstuartr@aol.com

#### **Andrea Rossi, MD**

G. Gaslini Children's Hospital  
Department of Neuroradiology  
IT-16147 Genoa  
andrearossi@ospedale-gaslini.ge.it

#### **Alex Rovira, MD**

Vall d'Hebron Hospital  
Department of Neuroradiology  
ES-08035 Barcelona  
alex.rovira@idi.gencat.cat

#### **Howard A. Rowley, MD**

University of Wisconsin  
Neuroradiology  
US-53792 Madison, WI  
HRowley@UWHealth.org

### S

#### **Małgorzata Szczerbo-Trojanowska, MD**

Medical University of Lublin  
Department of Interventional Radiology and  
Neuroradiology  
PL-20-090 Lublin  
malgorzataszczerbotrojanowska@umlub.pl

#### **James G. Smirniotopoulos, MD**

George Washington University  
US-20052 Washington, DC  
medpixman@gmail.com

#### **Lars Stenberg, MD**

Lund University Hospital  
Department of Medical Imaging and Physiology  
SE-22185 Lund  
Lars.Stenberg@skane.se

### T

#### **Klaus Tatsch, MD**

Municipal Hospital Karlsruhe  
Clinic of Nuclear Medicine  
DE-76133 Karlsruhe  
Klaus.Tatsch@klinikum-karlsruhe.de

#### **Majda Thurnher, MD**

Medical University Vienna  
Department of Radiology  
AT-1090 Vienna  
majda.thurnher@meduniwien.ac.at

#### **Charles Truwit, MD**

Hennepin County Medical Center  
Department of Radiology  
US-55415 Minneapolis, MN  
truwit@umn.edu

### U

#### **Lale Umutlu, MD**

University Hospital Essen  
Department of Diagnostic and  
Interventional Radiology and Neuroradiology  
DE-45147 Essen  
lale.umutlu@uk-essen.de

### V

#### **Antonios Valavanis, MD**

University Hospital Zurich  
Department of Neuroradiology  
CH-8091 Zurich  
Antonios.Valavanis@usz.ch

#### **Mark A. van Buchem, MD**

Leiden University Medical Center  
Neuroradiology  
NL-2300 RC Leiden  
M.A.van\_Buchem@lumc.nl

#### **Johan Van Goethem, MD**

University of Antwerp  
Department of Biomedical Sciences  
BE-2650 Edegem  
johan.vangoethem@uantwerpen.be

### Pedro Vilela, MD

Hospital da Luz  
Department of Neuroradiology  
PT-1500-650 Lisboa  
pvilela@hospitaldaluz.pt

### W

#### **Martin Wiesmann, MD**

University Hospital Aachen  
Department of Neuroradiology  
DE-52074 Aachen  
mwiesmann@ukaachen.de

#### **Robert Willinsky, MD**

The Toronto Western Hospital,  
University Health Network  
Department of Medical Imaging  
CA-M5T 2S8 Toronto, ON  
robert.willinsky@uhn.on.ca

#### **Michael Wissmeyer, MD**

University Hospital of Geneva (HUG)  
Department of Nuclear Medicine  
CH-1211 Geneva  
michael.wissmeyer@hcuge.ch

## Scientific Program IDKD Course

### Lectures

#### Rüttimann Lecture

This lecture is in memory of the visionary founder of the IDKD Prof. Alois Rüttimann (1922–2011) and aims to address pioneering radiologic, medical topics, or topics of general interest given by specially selected experts.

#### Sunday, April 3, 2016

17.15–18.00

##### Illness and People in Power

Małgorzata Szczerbo-Trojanowska, PL

### Lectures

#### Sunday, April 3, 2016

10.00–10.25

##### Opening Address

##### Instruction for Course Informatics

10.25–12.10

#### 1. Stroke: Basics, Imaging and Treatment

10.25–10.40

##### 1a. The Pathophysiology of Stroke

Diederik W.J. Dippel, NL

10.40–11.10

##### 1b. Key Decisions Based on MR vs CT in Acute Stroke

Timo Krings, CA

11.10–11.40

##### 1c. Results of Recent Trials in Acute Stroke Management

Diederik W.J. Dippel, NL

11.40–12.10

##### 1d. The Role of Neurosurgery in Acute Stroke

Luca Regli, CH

#### Monday, April 4, 2016

11.15–12.00

#### 2. Radiomics

Elizabeth A. Morris, USA

#### Tuesday, April 5, 2016

11.15–12.00

#### 3. Neuroradiology 2030 – a vision

Jan Gralla, CH

#### Wednesday, April 6, 2016

11.15–12.00

#### 4. PET/MR in Brain and Head and Neck Imaging: Early Results

Martin Hüllner, CH

#### Thursday, April 7, 2016

11.15–12.00

#### 5. An Introduction into DTI with Tractography

Paul M. Parizel, BE

#### Friday, April 8, 2016

11.15–12.00

#### 6. A New Look at Brain Anatomy and Its Impact on Diagnostics

Antonios Valavanis, CH

### Special Lectures

#### Monday, April 4, 2016

14.45–15.30

##### Antibody Therapy for Alzheimer's Diseases – Challenges and Advances

Christoph Hock, CH

#### Tuesday, April 5, 2016

14.45–15.45

##### Spin Gymnastics

Walter Kucharczyk, CA

#### Wednesday, April 6, 2016

15.15–16.00

##### Molecular and Functional Imaging in Dementia

Frederik Barkhof, NL

#### Thursday, April 7, 2016

14.30–15.30

##### MR Imaging in Patients with Pacemakers and Other Devices

14.30–15.00

##### Physical and Technological Issues

Daniel Nanz, CH

15.00–15.30

##### Clinical Implications

Jens Bremerich, CH

### Film Reading Panel

#### Wednesday, April 6, 2016

16.30–18.30

#### Moderators

Frederik Barkhof, NL

Walter Kucharczyk, CA

#### Panelists

Patrick A. Brouwer, SE

Hugh D. Curtin, USA

Thierry A. G. M. Huisman, USA

Rolf Jaeger, GB

Edmond A. Knopp, USA

Michael T. Modic, USA

Andrea Rossi, IT

Alex Rovira, ES

### Workshops

- 1. Cerebral Neoplasms**  
Edmond A. Knopp, USA  
Girish M. Fatterpekar, USA
- 2. Mass Lesions of the Brain: a Differential Diagnostic Approach**  
James G. Smirniotopoulos, USA  
Michael Brant-Zawadzki, USA
- 3. Evaluation of Cerebral Vessels**  
Mary E. Jensen, USA  
Robert Willinsky, CA
- 4. Brain Ischemia**  
Howard A. Rowley, USA  
Pedro Vilela, PT
- 5. Hemorrhagic Vascular Pathology**  
James V. Byrne, GB  
Martin Wiesmann, DE
- 6. Demyelinating Diseases**  
Kelly K. Koeller, USA  
Alex Rovira, ES
- 7. Movement Disorders and Metabolic Diseases**  
Marco Essig, CA  
Rolf Jaeger, GB
- 8. Neuroimaging in Dementia**  
Mark A. van Buchem, NL  
Frederik Barkhof, NL
- 9. Traumatic Neuroemergency**  
C. Douglas Phillips, USA  
Paul M. Parizel, BE
- 10. Non-traumatic Neuroemergency**  
John R. Hesselink, USA  
Patrick A. Brouwer, SE
- 11. Imaging the Patient with Seizures**  
Timo Krings, CA  
Lars Stenberg, SE
- 12. Imaging of Cerebral Infections**  
Majda Thurnher, AT  
David J. Mikulis, CA
- 13a. Diseases of the Sella and Parasellar Region**  
Walter Kucharczyk, CA
- 13b. Diseases of the Sella**  
Charles Truwit, USA
- 14. Diseases of the Temporal Bone**  
Jan W. Casselman, BE  
Timothy Beale, GB
- 15. Oral Cavity, Larynx and Pharynx**  
Hugh D. Curtin, USA  
Martin G. Mack, DE
- 16. Extramucosal Spaces of the Head and Neck**  
Jenny Hoang, USA
- 17. Degenerative Diseases of the Spine**  
Michael T. Modic, USA  
Johan Van Goethem, BE
- 18. Spinal Trauma and Injuries**  
Adam E. Flanders, USA  
Pia Maly Sundgren, SE
- 19. Spinal Inflammatory and Demyelinating Diseases**  
Jeffrey S. Ross, USA  
Philippe Demaerel, BE
- 20. Fetal MRI of the Brain and Spine**  
Thierry A. G. M. Huisman, USA  
P. Ellen Grant, USA
- 21. Children with Acute Neurologic Deficits: What Has to Be Ruled Out within 2–3 Hours**  
Andrea Rossi, IT  
W. Kling Chong, GB





## Program Overview

For topics of Workshops and Lectures please see pages 10–13.

### Saturday

April 2, 2016

09.45–10.00 Satellite Courses Introduction

#### Nuclear Medicine

10.15–11.30 Workshops

11.30–12.00 Intermission

12.00–13.15 Workshops

13.15–14.00 Sandwich Lunch

14.00–15.15 Workshops

15.15–15.45 Intermission

15.45–17.00 Workshops

17.15–18.30 Workshops

#### Pediatric Radiology

10.15–11.30 Workshops

11.30–12.00 Intermission

12.00–13.15 Workshops

13.15–14.00 Sandwich Lunch

14.00–15.15 Workshops

15.15–15.45 Intermission

15.45–17.00 Workshops

#### Breast Imaging

10.15–11.30 Workshops

11.30–12.00 Intermission

12.00–13.15 Workshops

13.15–14.00 Sandwich Lunch

14.00–15.15 Workshops

15.15–15.45 Intermission

15.45–17.00 Workshops

17.15–18.00 Highlight Lecture

### Sunday

April 3, 2016

#### Nuclear Medicine

09.00–10.15 Workshops

10.25–12.10 Highlight Lectures

#### IDKD

10.00–10.25 Opening Address /  
Introduction into Course  
Organization and Informatics

10.25–12.10 Highlight Lectures

14.00–15.15 Workshops

15.15–15.45 Intermission

15.45–17.00 Workshops

17.15–18.00 Rüttimann Lecture

18.00–19.30 Welcome Reception

**Exhibition open on Sunday  
at 09.30–19.30**

### Monday

April 4, 2016

08.00–09.15  
Workshops

09.15–09.45  
Intermission

09.45–11.00  
Workshops

11.15–12.00  
Highlight Lecture

14.45–15.30  
Special Lecture

16.00–17.15  
Workshops

17.15–17.45  
Intermission

17.45–19.00  
Workshops

### Tuesday

April 5, 2016

08.00–09.15  
Workshops

09.15–09.45  
Intermission

09.45–11.00  
Workshops

11.15–12.00  
Highlight Lecture

14.45–15.45  
Special Lecture

16.00–17.15  
Workshops

17.15–17.45  
Intermission

17.45–19.00  
Workshops

### Wednesday

April 6, 2016

08.00–09.15  
Workshops

09.15–09.45  
Intermission

09.45–11.00  
Workshops

11.15–12.00  
Highlight Lecture

15.15–16.00  
Special Lecture

16.30–18.30  
Film Reading  
Panel

17.15–17.45  
Intermission

### Thursday

April 7, 2016

08.00–09.15  
Workshops

09.15–09.45  
Intermission

09.45–11.00  
Workshops

11.15–12.00  
Highlight Lecture

14.30–15.30  
Special Lecture

16.00–17.15  
Workshops

17.15–17.45  
Intermission

17.45–19.00  
Workshops

19.15–23.30  
IDKD Dinner

### Friday

April 8, 2016

08.00–09.15  
Workshops

09.15–09.45  
Intermission

09.45–11.00  
Workshops

11.15–12.00  
Highlight Lecture

12.45–14.00  
Workshops

14.15–15.30  
Workshops

**Exhibition open on Monday, Tuesday and Thursday at  
09.00–12.00 and 15.00–18.00, on Wednesday at 09.00–12.00  
and 15.00–18.30, and on Friday at 09.00–11.30**

**Thieme & Froberg Booksellers' stand open on Tuesday to Friday**

## Scientific Program Satellite Courses

### Nuclear Medicine Satellite Course “Diamond”



#### Course Objectives

1. Teach the participants effective approaches in analysing diagnostic imaging challenges in patients with diseases of the brain, head and neck, spine using Nuclear Medicine imaging techniques
2. Allow participants in guided self study to recognize key imaging features of various diseases
3. Teach participants in which setting which imaging examination is most effective
4. Offer participants to interact with top international experts in the field of imaging of the diseases of the brain, head and neck, spine

#### Target audience:

- Nuclear Physicians / Radiologists
- Nuclear Medicine / Radiology residents and fellows
- Interested clinicians, particularly neurologists

#### Workshops

##### Brain

1. **Integrated Imaging of Brain Tumors**  
Ian Law, DK
2. **Nuclear Imaging of Dementia**  
Alexander Drzezga, DE
3. **Nuclear Imaging of Movement Disorders**  
Klaus Tatsch, DE
4. **Imaging of Brain Perfusion**  
John Prior, CH

##### Head and Neck

5. **Hybrid Imaging in Head & Neck Cancer**  
Martin Hüllner, CH
6. **Integrated Imaging of Thyroid Disease**  
Michael Wissmeyer, CH

IDKD Highlight Lectures on Sunday, April 3, are part of the “Diamond” program. Lecture schedule is on page 10.

### Pediatric Radiology Satellite Course “Kangaroo”



#### Course Objectives

1. Teach the participants effective approaches in analysing diagnostic imaging challenges in pediatric patients with the diseases of the brain, head and neck, spine
2. Allow participants in guided self study to recognize key imaging features of various diseases
3. Teach participants in which settings which imaging examination is most effective
4. Offer participants to interact with top international experts in the field of pediatric imaging of the brain, head and neck, spine

#### Target audience:

- Pediatric radiologists, pediatric radiology residents and fellows
- Radiologists with interest in and/ or obligation for pediatric radiology
- Interested clinicians, particularly neurologists
- Radiology technicians with advanced competences/interests

#### Workshops

1. **Children with Epilepsy: Neuroimaging Findings**  
W. Kling Chong, GB
2. **Advanced MR Techniques in Pediatric Neuroradiology: What is Ready for Clinical Prime Time?**  
P. Ellen Grant, USA
3. **Non-accidental Injury of the Pediatric Central Nervous System**  
Thierry A. G. M. Huisman, USA
4. **The Acute Pediatric Spine and Spinal Cord**  
Andrea Rossi, IT

### Breast Imaging Satellite Course “Pearl”



#### Course Objectives

1. Teach the participants effective approaches in analysing diagnostic imaging challenges in breast disease
2. Allow participants in guided self study to recognise key imaging features of various breast diseases
3. Teach participants in which setting which imaging examination is most effective
4. Offer participants to interact with top international experts in the field of breast imaging

#### Target audience:

- Radiologists
- Radiology residents and fellows
- Interested clinicians, especially gynecologists
- Radiology technicians with advanced competences/ interests

#### Workshops

1. **Mammography: Subtle Signs of Malignancy and Other Challenges in Daily Practice**  
Michael J. Michell, GB
2. **Mammography: BI-RADS Update and Tomosynthesis**  
Elizabeth A. Morris, USA
3. **Breast Ultrasound: BI-RADS Update and Imaging Pathologic Correlation**  
Alexander Mundinger, DE
4. **Breast MRI: An Update on Guidelines and BI-RADS**  
Lale Umutlu, DE

#### Highlight Lecture

**Contrast-enhanced Digital Mammography**  
Elizabeth A. Morris, USA

## Registration Fees

### All prices in Swiss Francs, CHF

Early fee: until January 31, 2016  
 Standard fee: until March 27, 2016  
 Onsite fee: from March 28, 2016

The participants of the IDKD Course and the Satellite Courses receive a Syllabus and access to the IDKD online cases, as well as a certificate of attendance.

Registration fees are based on the participants using their own laptops.

The participants are encouraged to bring their own laptops (PC or Mac) to view cases. 220V standard Swiss electric outlets will be provided in the classrooms.

For participants without laptops, IDKD will supply laptops as during the past IDKD courses. Those participants will have a possibility to share one IDKD laptop provided in the classroom with two of their group-mates at an extra fee of CHF 100.- each for the IDKD Course and CHF 50.- each for the Satellite Courses.

	Early fee until January 31, 2016	Standard fee until March 27, 2016
IDKD Course Regular	1.180.–	1.420.–
IDKD Course Resident**	940.–	1.140.–
Nuclear Medicine Satellite Course "Diamond" Regular	400.–	460.–
Nuclear Medicine Satellite Course "Diamond" Resident**	320.–	370.–
Pediatric Radiology Satellite Course "Kangaroo" Regular	300.–	340.–
Pediatric Radiology Satellite Course "Kangaroo" Resident**	240.–	270.–
Breast Imaging Satellite Course "Pearl" Regular	350.–	400.–
Breast Imaging Satellite Course "Pearl" Resident**	280.–	320.–

\* Laptop rental fee: CHF 100.- for IDKD Course and CHF 50.- for Satellite Courses

\*\* A certificate signed by Head of Department must be sent to the IDKD Office upon registration (fax: +41 43 430 2544 or scanned to info@idkd.org)

### Onsite registration fee from March 28, 2016

IDKD only or IDKD and Satellite Course:  
 Standard fee + CHF 100.–  
 Satellite Course only:  
 Standard fee + CHF 50.–

### Satellite Courses

Combination tickets: IDKD and Satellite will be offered with approx. 5% discount on the IDKD and Satellite fee for the current registration period.



### Payment

Bank: UBS AG  
 Postfach, CH-8098 Zurich  
 Account nr: 251-964156.01A  
 Clearing: 251  
 BIC/Swift Code: UBSWCHZH80A  
 IBAN: CH44 0025 1251 9641 5601 A  
 References: SFAMR  
 Credit Cards: VISA or Eurocard/Mastercard

### Cancellation of Registration

Written notification is required for all cancellations and changes. Refunds are made as follows: 80% before January 31, 2016  
 50% before February 25, 2016  
 No refunds thereafter.  
 Same cancellation policy applies to the Satellite Courses.

## Payment – Cancellation

### Cancellation of the IDKD Course

IDKD is entitled to cancel the Courses at any time. Course fees will be reimbursed in case of cancellation of the IDKD Course due to reasons other than war, war-like events, acts of terrorism or epidemics, in which case only a proportionate part would be refundable.

### Confirmation of Registration and Course Badge

Online registrations will be automatically confirmed. Course badges will not be sent out this year; registered participants will receive their personal course badge onsite at the Registration Desk. You will be notified by email about the procedure to pick up your badge closer to the Course. The badge is personal and is your admission card to the course. **Do not forget it! Do not lose it!** In case of loss, a replacement badge will be provided against an administrative charge of CHF 50.–.

### Disclaimer

The IDKD and the Course Management cannot accept liability for acts of any suppliers to this meeting nor the safety of any attendee while in transit to or from this event nor for any accidents or injuries that may occur. Any liability of IDKD and the Course Management is excluded. All participants are strongly advised to carry sufficient travel and health insurance.

### Applicable Law and Jurisdiction

Swiss law is applicable. The courts of Zurich, Switzerland, shall have exclusive jurisdiction.

### Teaching Hours

The Course comprises twenty 75-minute workshops and approximately 12 hours of plenary lectures, i.e. a total of 36.75 hours of teaching.

In addition:

Nuclear Medicine:	9.25 hours
Pediatric Radiology:	5 hours
Breast Imaging:	5.75 hours

Teaching hours can be directly claimed as credits in many countries.

In order to secure the correct attendance record for CME purposes, IDKD will register your attendance at every workshop, using individual self-adhesive bar-code stickers. Those stickers need to be used at the exit from every workshop that you attended.

**The 48th International Diagnostic Course Davos** is accredited by the European Accreditation Council for Continuing Medical Education (EACCME) to provide the following CME activity for medical specialists. The EACCME is an institution of the European Union of Medical Specialists (UEMS), [www.uems.net](http://www.uems.net).



The 48th International Diagnostic Course Davos is designated for a maximum of **35 hours of European external CME credits**. Each medical specialist should claim only those hours of credit that he/she actually spent in the educational activity. The EACCME credit system is based on 1 ECMEC per hour with a maximum of 3 ECMECs for half a day and 6 ECMECs for a full-day event. Through an agreement between the European Union of Medical Specialists and the American

Medical Association, physicians may convert EACCME credits to an equivalent number of AMA PRA Category 1 Credits™. Information on the process to convert EACCME credit to AMA credit can be found at [www.ama-assn.org/go/internationalcme](http://www.ama-assn.org/go/internationalcme).

Live educational activities, occurring outside of Canada, recognized by the UEMS-EACCME for ECMEC credits are deemed to be Accredited Group Learning Activities (Section 1) as defined by the Maintenance of Certification Program of The Royal College of Physicians and Surgeons of Canada.

The Swiss Society of Radiology designates the IDKD with 42 category 1 points.

The Academy for Continuing Medical Education in Radiology designates the IDKD with 35 CME-points, category 1.



### Nuclear Medicine Satellite Course “Diamond”

The IDKD Nuclear Medicine Satellite Course “Diamond” is accredited by the European Accreditation Council for Continuing Medical Education (EACCME) to provide the following CME activity for medical specialists. The EACCME is an institution of the European Union of Medical Specialists (UEMS), [www.uems.net](http://www.uems.net).

The IDKD Nuclear Medicine Satellite Course “Diamond” is designated for a maximum of **9 hours of European external CME credits**. Each medical specialist should claim only those hours of credit that he / she actually spent in the educational activity.

Through an agreement between the European Union of Medical Specialists and the American Medical Association, physicians may convert EACCME credits to an equivalent number of AMA PRA Category 1 Credits™. Information on the process to convert EACCME credit to AMA credit

can be found at [www.ama-assn.org/go/internationalcme](http://www.ama-assn.org/go/internationalcme).

Live educational activities, occurring outside of Canada, recognized by the UEMS-EACCME for ECMEC credits are deemed to be Accredited Group Learning Activities (Section 1) as defined by the Maintenance of Certification Program of The Royal College of Physicians and Surgeons of Canada.

The Swiss Society of Radiology designates the course with 11 category 1 points.

The Swiss Society of Nuclear Medicine designates the course with 10 category 1 points.

This event is under the auspices of EANM.



### Pediatric Radiology Satellite Course “Kangaroo”

The IDKD Pediatric Radiology Satellite Course “Kangaroo” is accredited by the European Accreditation Council for Continuing Medical Education (EACCME) to provide the following CME activity for medical specialists. The EACCME is an institution of the European Union of Medical Specialists (UEMS), [www.uems.net](http://www.uems.net).

The IDKD Pediatric Radiology Satellite Course “Kangaroo” is designated for a maximum of **6 hours of European external CME credits**. Each medical specialist should claim only those hours of credit that he / she actually spent in the educational activity.

Through an agreement between the European Union of Medical Specialists and the American Medical Association, physicians may convert EACCME credits to an equivalent number of AMA PRA Category 1 Credits™. Information on the process to convert EACCME credit to AMA credit can be found at [www.ama-assn.org/go/internationalcme](http://www.ama-assn.org/go/internationalcme).

Live educational activities, occurring outside of Canada, recognized by the UEMS-EACCME for ECMEC credits are deemed to be Accredited Group Learning Activities (Section 1) as defined

by the Maintenance of Certification Program of The Royal College of Physicians and Surgeons of Canada.

The Swiss Society of Radiology designates the course with 6 category 1 points.

The Swiss Society of Pediatric Radiology designates the course with 6 category 1 points.

### Breast Imaging Satellite Course “Pearl”

The IDKD Breast Imaging Satellite Course is accredited by the European Accreditation Council for Continuing Medical Education (EACCME) to provide the following CME activity for medical specialists. The EACCME is an institution of the European Union of Medical Specialists (UEMS), [www.uems.net](http://www.uems.net).

The IDKD Breast Imaging Satellite Course is designated for a maximum of **6 hours of European external CME credits**. Each medical specialist should claim only those hours of credit that

he/ she actually spent in the educational activity. Through an agreement between the European Union of Medical Specialists and the American Medical Association, physicians may convert EACCME credits to an equivalent number of AMA PRA Category 1 Credits™. Information on the process to convert EACCME credit to AMA credit can be found at [www.ama-assn.org/go/internationalcme](http://www.ama-assn.org/go/internationalcme).

Live educational activities, occurring outside of Canada, recognized by the UEMS-EACCME for ECMEC credits are deemed to be Accredited Group Learning Activities (Section 1) as defined by the Maintenance of Certification Program of The Royal College of Physicians and Surgeons of Canada.

The Swiss Society of Radiology designates the course with 6 category 1 points.

The Swiss Society of Gynecology and Obstetrics designates the course with 7 points.

## General Information

### Course Management

#### IDKD Davos Office

Maria Tsiplakova Vögeli  
info@idkd.org

### Local Office

Davos Congress  
info@idkd.org

### Venue and Local Course Office

Congress Centre Davos  
Talstrasse 49a  
CH-7270 Davos-Platz  
Switzerland

### Opening Hours of the Congress Centre (entrance from Talstrasse)

Saturday, April 2	08.00–19.00
Sunday, April 3	08.30–19.30

Monday through Friday always 30 minutes before until 30 minutes after the session.

### Starting Times of the Courses

#### Nuclear Medicine / Pediatric Radiology / Breast Imaging

Saturday, April 2, 2016	09.45
-------------------------	-------

#### IDKD Course

Sunday, March 3, 2016	10.00
-----------------------	-------

### Language

English

### Change of Program

Information and times mentioned in this document may be subject to change. Participants are requested to check the exact schedule for the following day every evening at the notice board. Please review updated information on [www.idkd.org](http://www.idkd.org).

### Lunch Satellite Courses

Sandwich lunch will be served at 13.15–14.00 on Saturday only.

### Coffee Breaks

#### Satellite Courses

Saturday, April 2, 2016	11.30–12.00
	15.15–15.45

### IDKD courses:

Free coffee will be served during the first morning intermission and during the afternoon intermission between the workshops on Monday to Friday. On Sunday morning, coffee will not be served. On Wednesday and Friday afternoon coffee will not be served.

### IDKD on the Internet

Information about IDKD activities is constantly updated. Please visit our website at [www.idkd.org](http://www.idkd.org).



### Official Carrier

As official carrier to IDKD 2016 in Davos Swiss International Air Lines offers you the best booking flexibility together with Swiss product and service quality, all at a significantly discounted price. As the national airline of Switzerland we offer event participants a reduction of up to 10% off regular fares. Your stay in Switzerland begins the moment you board one of our aircraft.

Discounted congress fares are marked with a white upper corner. Reductions depend on the fare type, routing and availability and are valid on the full SWISS network for flights to Switzerland, including flights operated by one of our partner airlines with an LX flight number. These fares are bookable with immediate effect for the travel period 14 days before and after the event.

To take advantage of this offer, book simply and conveniently on [swiss.com](http://swiss.com) via the following link: [www.swiss.com/event](http://www.swiss.com/event). The event code is sent in the confirmation e-mail to the registered participants.

SWISS is already looking forward to pampering you with typical Swiss hospitality on board.

## Travel Arrangements

### Ground Transportation by train

Train connections every hour between 06.00 and 21.00 from Zurich main station and Zurich Airport to Davos-Dorf.

Schedule: [www.sbb.ch/en](http://www.sbb.ch/en).

### by car

147 km from Zurich

235 km from Basel

304 km from Munich

538 km from Frankfurt am Main

240 km from Milan



### Organization

Yela von Schulthess  
Olga Zollikofer

### Welcome Reception

Sunday, April 3, 2016  
18.00–19.30  
Congress Centre

All participants and their guests  
are cordially invited.

### IDKD Dinner

Thursday, April 7, 2016  
19.15–23.30  
Hotel Steigenberger Belvédère  
Price: CHF 80.– (all drinks included)

Limited number of participants.  
Online registration: [www.idkd.org](http://www.idkd.org)



### Tourist Office

Davos Destinations-Organization  
Talstrasse 41  
CH-7270 Davos-Platz, Switzerland  
Phone: +41 81 415 21 21  
Fax: +41 81 415 21 00  
E-Mail: [info@davos.ch](mailto:info@davos.ch)  
Web: [www.davos.ch](http://www.davos.ch)

### Accommodation

Davos Congress  
Phone: +41 81 415 21 63  
Fax: +41 81 415 21 69  
E-Mail: [congress@davos.ch](mailto:congress@davos.ch)

Accommodation booking for the IDKD Davos is handled by Davos Congress. Hotel reservations at specially negotiated rates must be placed online at [www.idkd.org](http://www.idkd.org) (IDKD Davos Accommodation). Headquarter of the course: The Grandhotel Steigenberger Belvédère.

### Booking and Cancellation Policy

1. To guarantee your hotel booking your credit card number is needed.
2. Payment should be made directly at your hotel upon departure.
3. In case of cancellations, your credit card details will be forwarded to the hotel.

The cancellation policy for each participant will be shown at the accommodation booking platform as well as in the confirmation.

Should the participants, for any reason whatsoever, need to withdraw from a reservation, please refer to the individual cancellation policy attached in the hotel confirmation. Generally, the following conditions / fees shall apply:

4. Cancellation up to 14 days (or less) prior to

the booked arrival date results in no fees (except for cancellation insurance fees).

5. Cancellation 13 (or less) to 0 days prior to the booked arrival date results in the charge of 100% of the entire booking amount.

In case the room might not be rented out after cancellation, the hotel reserves the right to charge up to 100% of the entire booking amount (excl. guest taxes and meals) either by bill or to charge the credit card directly.

6. "No Show": In case of no show without prior cancellation, the hotel reserves the right to charge 100% of the entire booking amount to the credit card or to send a bill for the respective amount.

### Bank, Post Office

At the course registration desk, Swiss Francs, Eurocard/Mastercard and VISA are accepted. Foreign currencies may be changed at one of the local banks (Monday–Friday, 08.30–12.00 and 14.00–17.30). There is an ATM (Bankautomat) available 24 hours outside the North entrance of the Congress Centre on Promenade Floor.

### Car Parking

Participants are advised to observe the official parking signs. Course management cannot accept responsibility for unauthorized parking. There are very limited meter parking facilities in front of the main entrance of the Congress Centre at Talstrasse, therefore we suggest that you park your car at your hotel and use public buses free of charge. Your hotel guest card will entitle you to free bus transportation in Davos.

The organizers are grateful to all companies and persons who helped realise and develop this course through their collaboration and contributions.

### Main Global Sponsor

Guerbet, Europe



### Key Global Sponsor

GE Healthcare



### Sponsor

Sirtex



### Donations

THP Medical Products Vertriebs GmbH, Vienna, AT

### Sponsorship and Advertisements

#### Breast Imaging Course:

Siemens Schweiz AG, Zurich, CH

TOSHIBA Medical Systems AG, Volketswil, CH

#### IDKD Course

Advanced Accelerator Applications, Geneva, CH

Thieme & Froberg GmbH, Berlin, DE

#### Technical Exhibits

##### Breast Imaging Course

BARD Medica SA, Oberrieden, CH

Siemens Schweiz AG, Oberrieden, CH

#### IDKD Course

Bayer (Schweiz) AG, Zurich, CH

Bracco Suisse SA, Manno, CH

European Telemedicine Clinic S.L., Barcelona, ES

GE Healthcare, Glattbrugg/Zurich, CH

Guerbet AG, Zurich, CH

Thieme & Froberg GmbH, Berlin, DE

Radiolutions AG, Baar, CH

TeraRecon, Frankfurt, DE

Theraclion, Malakoff, FR

### 2016

IDKD 2016 Asia

#### Diseases of the Abdomen and Pelvis

May 28–30, 2016 Beijing

June 3–5, 2016 Hong Kong

IDKD 2016 Greece

#### Diseases of the Chest, Heart and Vascular System

September 15–18, 2016

Athens, Greece

IDKD 2016 South America

#### Musculoskeletal Diseases

November 4–6, 2016

Rio de Janeiro, Brazil

### 2017

IDKD 2017 Davos

#### Musculoskeletal Diseases

March 26–30, 2017

Visit the IDKD website at [www.idkd.org](http://www.idkd.org) for updated information.



## Diseases of the Abdomen and Pelvis – 腹盆腔疾病

May 28–30, 2016, Beijing, China

中国北京, 2016年5月28日-30日

June 3–5, Hong Kong, China

中国香港, 2016年6月3日-5日

An Interactive Course in Diagnostic Imaging – 影像诊断互动课程  
[www.idkd.org](http://www.idkd.org)



9th IDKD Intensive Course  
in Greece  
Excellence in Teaching



1st IDKD Intensive Course  
in South America  
Excellence in Teaching



Advanced  
Accelerator  
Applications

BRIDGING  
SCIENCE  
WITH LIFE

Shaping a new age of patient care in  
**Molecular Nuclear Medicine**

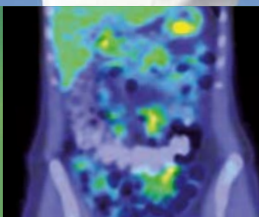


Revolutionizing  
patient management:  
**Theragnostics**

From **Molecular  
Imaging to Molecular  
Nuclear Therapy**



Making **personalized  
treatment** a reality



## Diseases of the Chest, Heart and Vascular System

September 15–18, 2016  
Athens, Greece

An Interactive Course in Diagnostic  
Imaging

[www.idkd.org](http://www.idkd.org)

## Musculoskeletal Diseases

November 4–6, 2016  
Rio de Janeiro, Brazil

An Interactive Course in Diagnostic  
Imaging

[www.idkd.org](http://www.idkd.org)



A worldwide  
presence

[www.adacap.com](http://www.adacap.com)

Advanced Accelerator Applications (Switzerland) SA  
Rue de la Tour de l'île 4 – 1204 Geneva – Switzerland  
Tel +41 (0)22 700 2130 Fax +41 (0)22 735 2115 Email [info@adacap.com](mailto:info@adacap.com)



# The little things. That's what we're perfect in.

As the airline of Switzerland we are small enough to give you a personal welcome, yet big enough to connect you to over 100 destinations across the world. For more information visit [swiss.com](http://swiss.com)



SWISS is pleased to support  
the 48<sup>th</sup> IDKD Davos  
as official airline

A STAR ALLIANCE MEMBER 

Our sign is a promise.

