



# 49th International Diagnostic Course Davos Excellence in Teaching



## **Musculoskeletal Diseases**

**March 26 – 30, 2017**  
**Davos, Switzerland**

---

### **An Interactive Course in Diagnostic Imaging**

Nuclear Medicine Satellite Course “Diamond”: March 25–26, 2017  
Pediatric Radiology Satellite Course “Kangaroo”: March 25, 2017  
Breast Imaging Satellite Course “Pearl”: March 25, 2017



*Come and see all that we have to offer.*

Visit our stand at the IDKD in Davos  
March 28 – 30, 2017



The International Diagnostic Course in Davos, IDKD, is an organ-based annual postgraduate course with a yearly changing topic.

## Table of Contents

<b>General Concept and Course Objectives</b>	<b>2</b>
<b>Organization</b>	<b>4</b>
<b>Faculty Addresses</b>	<b>5</b>
<b>Scientific Program Satellite Courses</b>	
– Satellite Course “Diamond”	<b>10</b>
– Satellite Course “Kangaroo”	<b>11</b>
– Satellite Course “Pearl”	<b>11</b>
<b>Scientific Program IDKD Course</b>	
– Lectures	<b>12</b>
– Workshops	<b>14</b>
<b>Venue Floor Plan</b>	<b>16</b>
<b>Program Overview</b>	<b>18</b>
<b>Registration Fees</b>	<b>20</b>
<b>Payment – Cancellation</b>	<b>21</b>
<b>CME Accreditation</b>	<b>22</b>
<b>General Information</b>	<b>24</b>
<b>Travel Arrangements</b>	<b>26</b>
<b>Social Program</b>	<b>28</b>
<b>Local Information Davos</b>	<b>29</b>
<b>Acknowledgements</b>	<b>30</b>
<b>Future IDKD Courses</b>	<b>30</b>

The course objectives are to review and discuss effective approaches to diagnosis and specific interventions in musculoskeletal radiology.

### Workshops

The participants will attend 20 different workshops covering the medical imaging approach to the diagnosis of the musculoskeletal diseases. The instruction is in groups of approximately 50–60 participants.

During workshops, participants first get a brief introduction to the subject and then study case material prepared by the instructors. The participants are encouraged to bring their own laptop (PC or Mac) for case viewing and will get the relevant case files on a USB stick. The case viewing is supported by a special software, uniquely developed for IDKD and drawing from the extensive expertise with electronic teaching.

Finally, the instructors guide through the cases, discuss different diagnoses, present additional material and ask pertinent questions to the participants, thus allowing active interaction.

### Lectures on “Hot Topics” and Diagnostic Dilemmas

The Rüttimann Lecture is presented on Sunday. Highlight and Special lectures presented daily by experts on “hot topics” and new developments or political issues in radiology and associated sciences will complete the educational program.

### Film Reading Panel

A diagnostic competition open to all participants and teachers, based on selected cases with answers. Quiz answers need to be handed in at the Registration Desk by **Tuesday noon** prior to the Film Reading Panel.

Prizes will be awarded to the participants with the best answers. We believe, that answering the quiz is an individual accomplishment and therefore reserve the right to exclude very similar answers from the competition.

### Course Syllabus

The Syllabus containing the condensed version of the presented workshops is included in the registration fee. IDKD participants will receive a printed version as well as the files online.

### IDKD online cases

IDKD offers access to two well-documented cases per teacher in the IDKD online database. Each participant will be able to access the database with their IDKD user name and password.

### IDKD on the Internet

Information about IDKD activities is constantly updated. Please visit our website at [www.idkd.org](http://www.idkd.org)

### Exhibition

Booths of selected imaging industries and one bookseller.

### Course and Teacher Evaluation

The IDKD is continuously investing in organisation, e-facilities and teaching. To help us refine and improve the level of the International Diagnostic Course Davos, the organisers would greatly appreciate your taking a few moments to complete the course evaluation.

The USB sticks will contain a link to online evaluation forms for workshops, lectures, and courses in general.

### Satellite Courses

#### Nuclear Medicine Satellite Course “Diamond”

6 workshops on Nuclear Medicine. IDKD Opening Highlight Lecture on Sunday, March 26, is part of the “Diamond” program.

#### Pediatric Radiology Satellite Course “Kangaroo”

4 workshops on specific aspects of Pediatric Imaging.

#### Breast Imaging Satellite Course “Pearl”

4 workshops and a Highlight Lecture on specific aspects of Breast Imaging.

### CME Credits:

see also page 22

### IDKD Course:

EACCME:

29 hours of European external CME credits  
Swiss Society of Radiology: 38 category 1 points  
For participants from Germany: Academy for Continuing Medical Education in Radiology: 29 CME-points, category B  
ESSR: 2 points Cat. 2 for the ESSR Diploma

### Nuclear Medicine Course “Diamond”:

EACCME:

8 hours of European external CME credits  
Swiss Society of Radiology: 8 category 1 points  
Swiss Society of Nuclear Medicine: 10 category 1 points  
This event is under the auspices of EANM

### Pediatric Radiology Course “Kangaroo”:

EACCME:

6 hours of European external CME credits  
Swiss Society of Radiology: 5 category 1 points  
Swiss Society of Pediatric Radiology: 5 CME 1 points

### Breast Imaging Course “Pearl”:

EACCME:

6 hours of European external CME credits  
Swiss Society of Radiology: 6 category 1 points  
Swiss Society of Gynecology and Obstetrics: 7 points  
For participants from Germany: Academy for Continuing Medical Education in Radiology: 6 CME-points, category B

### International Diagnostic Course Davos

#### Course Directors

Jürg Hodler, Zurich  
Rahel A. Kubik-Huch, Baden  
Gustav K. von Schulthess, Zurich

#### International Advisor

Elmar M. Merkle, Basel

#### Satellite Course Advisors

Thierry A. G. M. Huisman, Baltimore, MD, USA  
(Pediatric Radiology)  
Rahel A. Kubik-Huch, Baden  
(Breast Imaging)  
Gustav K. von Schulthess, Zurich  
(Nuclear Medicine)

#### American Advisors

Michael Recht, New York, NY, USA  
Lawrence M. White, Toronto, ON, CA

#### Online Case Editor

Fabian Morsbach, Zurich

#### Course Management

Maria Tsiplakova Vögeli



### Foundation for the Advancement of Education in Medical Radiology

#### Chairman

Christoph Schmid, Zurich

#### Members

Thomas Kehl, Davos-Clavadel  
Walter Weder, Zurich  
Gustav K. von Schulthess, Zurich  
Christoph L. Zollikofer, Kilchberg (Zurich)

### A

#### Georgina Allen, MD

Oxford Radcliffe Hospitals  
Department of Radiology  
GB-OX3 9DU Oxford  
georgina.allen@gtc.ox.ac.uk

#### Mark W. Anderson, MD

University of Virginia Health Sciences Center  
Division of Musculoskeletal Imaging  
US-22908-0170 Charlottesville, VA  
mwa3a@virginia.edu

#### Suzanne E. Anderson, MD

Cantonal Hospital Baden  
Department of Radiology  
CH-5404 Baden  
andersonsembach@bluewin.ch

#### Gustav Andreisek, MD

Cantonal Hospital Münsterlingen  
Department of Radiology  
CH-8596 Münsterlingen  
gustav@andreisek.de

### B

#### Laura W. Bancroft, MD

Florida Hospital  
Department of Diagnostic Radiology  
US-32803-1248 Orlando, FL  
laura.bancroft.MD@flhosp.org

#### Christopher F. Beaulieu, MD

Stanford University Medical Center  
Department of Musculoskeletal Imaging  
US-94305 Stanford, CA  
beaulieu@stanford.edu

#### Ian Beggs, MD

Royal Infirmary  
Department of Clinical Radiology  
GB-EH16 4SA Edinburgh  
ianbeggs@doctors.org.uk

#### Ulrich Bick, MD

Charité – Universitätsmedizin Berlin  
Department of Radiology  
DE-10117 Berlin  
ulrich.bick@charite.de

#### Klaus Bohndorf, MD

Medical University of Vienna  
Department of Biomedical Imaging  
and Image-guided Therapy  
AT-1090 Vienna  
klaus.bohndorf@meduniwien.ac.at

#### Robert D. Boutin, MD

University of California, Davis  
Department of Radiology  
US-95817 Sacramento, CA  
rdboutin@ucdavis.edu

### C

#### Julia Camps Herrero, MD

Hospital Universitario de la Ribera  
Radiology Department  
ES-46600 Alzira, Valencia  
juliacamps@gmail.com

#### Christine Chung, MD

UCSD Medical Center  
Department of Radiology  
US-92103 San Diego, CA  
cbchung@ucsd.edu

## Faculty Addresses

### D

#### **Marcelo de Abreu, MD**

Hospital Mãe de Deus  
Department of Radiology  
BR - Porto Alegre, RS  
marcelorad@gmail.com

#### **Oliver Distler, MD**

University Hospital Zurich  
Department of Rheumatology  
CH-8091 Zurich  
Oliver.Distler@usz.ch

#### **Hassan Douis, MD**

Queen Elizabeth Hospital Birmingham  
University Hospitals Birmingham  
NHS Foundation Trust  
Department of Radiology  
GB-B15 2GW Edgbaston, Birmingham  
Hassan.Douis@uhb.nhs.uk

### E

#### **Einat Even-Sapir Weizer, MD**

Tel Aviv Sourasky Medical Center  
Department of Nuclear Medicine  
IL-64239 Tel Aviv  
evensap@tasmc.health.gov.il

### G

#### **Gopinath Gnanasegaran, MD**

Royal Free London NHS Foundation Trust  
Department of Nuclear Medicine  
GB-NW3 2QG London  
gopinath.gnanasegaran@nhs.net

#### **Andrew J. Grainger, MD**

Chapel Allerton Orthopaedic Hospital  
Leeds Teaching Hospitals and Leeds University  
Department of Musculoskeletal Radiology  
GB-LS7 4SA Leeds  
andrewgrainger@nhs.net

#### **James F. Griffith, MD**

Prince of Wales Hospital  
The Chinese University of  
Hong Kong New Territories  
Department of Imaging and  
Interventional Radiology  
CN-Shatin N.T., Hong Kong  
griffith@cuhk.edu.hk

#### **Roman Guggenberger, MD**

University Hospital Zurich  
Institute for Diagnostic and  
Interventional Radiology  
CH-8091 Zurich  
roman.guggenberger@usz.ch

### H

#### **Anna Hirschmann, MD**

University Hospital of Basel  
Clinic of Radiology and Nuclear Medicine  
CH-4031 Basel  
anna.hirschmann@usb.ch

#### **Thierry A. G. M. Huisman, MD**

Johns Hopkins Hospital  
Division of Pediatric Radiology  
US-21287 Baltimore, MD  
thuisma1@jhmi.edu

### J

#### **Jon A. Jacobson, MD**

University of Michigan Medical Center  
Department of Radiology  
US-8109-0326 Ann Arbor, MI  
jjacobsn@med.umich.edu

#### **Diego Jaramillo, MD**

Miami Children's Hospital  
Department of Radiology  
US-33155 Miami, FL  
Diegjar1@gmail.com

### K

#### **Apostolos Karantanas, MD**

University Hospital of Crete  
Department of Medical Imaging  
GR-711 10 Heraklion, Crete  
akarantanas@gmail.com

#### **Ara Kassarjian, MD**

Musculoskeletal Radiology  
Corades, LLC  
US-02446 Brookline, MA  
Elite Sports Imaging, SL  
ES-28220 Majadahonda, Madrid  
akassarjian@gmail.com

#### **Mark J. Kransdorf, MD**

Mayo Clinic College of Medicine  
Department of Radiology  
US-85044 Phoenix, AZ  
kransdorf.mark@mayo.edu

#### **Torsten Kuwert, MD**

University Hospital of Erlangen  
Clinic of Nuclear Medicine  
DE-91054 Erlangen  
torsten.kuwert@uk-erlangen.de

### L

#### **Eva Llopis, MD**

Hospital Universitario de la Ribera  
Department of Radiology  
ES-46600 Alzira, Valencia  
ellopis@hospital-ribera.com

### M

#### **Mario Maas, MD**

University of Amsterdam  
Academic Medical Center  
Department of Radiology  
NL-1105 AZ Amsterdam  
m.maas@amc.uva.nl

#### **Theodore T. Miller, MD**

Hospital for Special Surgery  
Weill Medical College of Cornell University  
Department of Radiology and Imaging  
US-10021 New York, NY  
millertt@hss.edu

#### **William B. Morrison, MD**

Thomas Jefferson University Hospital  
Department of Radiology  
US-19107 Philadelphia, PA  
william.morrison@jefferson.edu

#### **Mark D. Murphey, MD**

American Institute for  
Radiologic Pathology (AIRP)  
Department of Radiologic Pathology  
US-20306 Washington, DC  
mmurphey@acr.org

### N

#### **Rutger A.J. Nievelstein, MD**

University Medical Center Utrecht  
Department of Radiology & Nuclear Medicine  
NL-3508 GA Utrecht  
R.A.J.Nievelstein@umcutrecht.nl

### P

#### **William E. Palmer, MD**

Massachusetts General Hospital  
Harvard Medical School  
Department of Radiology  
US-02114 Boston, MA  
wpalmer@partners.org

## Faculty Addresses

### Mini N. Pathria, MD

University of California, San Diego  
UCSD Medical Center  
Department of Radiology  
US-92103-8756 San Diego, CA  
mpathria@ucsd.edu

### Frédéric Paycha, MD

Hôpital Lariboisière  
Department of Nuclear Medicine  
FR-75010 Paris  
frederic.paycha@wanadoo.fr

### Christian W. A. Pfirrmann, MD

University of Zurich  
University Hospital Balgrist  
Radiology Department  
CH-8008 Zurich  
christian.pfirrmann@balgrist.ch

### Victor Pullicino, MD

The Robert Jones and Agnes Hunt Hospital  
Department of Diagnostic Imaging  
GB-SY10 7AG Oswestry, Shropshire  
victor.pullicino@rjah.nhs.uk

## R

### Michael Recht, MD

NYU Langone Medical Center  
Department of Radiology  
US-10016 New York, NY  
Michael.Recht@nyumc.org

### Donald Resnick, MD

University of California, San Diego  
Department of Veterans Affairs Medical Center  
US-92161 San Diego, CA  
dresnick@ucsd.edu

### Charles S. Resnik, MD

University of Maryland Hospital  
Department of Radiology  
US-21201 Baltimore, MD  
cresnik@umm.edu

### R. Geoff Richards, FBSE, FIOR

AO Research Institute Davos  
CH-7270 Davos  
geoff.richards@aofoundation.org

### Simon G. F. Robben, MD

Maastricht University Medical Center  
Department of Radiology  
NL-6202 AZ Maastricht  
s.robben@maastrichtuniversity.nl

### David A. Rubin, MD

Washington University School of Medicine  
Department of Radiology  
US-63110 St. Louis, MO  
rubinda@wustl.edu

### Frank Rühli, MD

University of Zurich, Faculty of Medicine  
Institute of Evolutionary Medicine  
CH-8057 Zurich  
frank.ruhli@iem.uzh.ch

## S

### Rüdiger Schulz-Wendtland, MD

University Hospital of Erlangen  
Department of Radiology  
Gynecological Radiology  
DE-91054 Erlangen  
ruediger.schulz-wendtland@uk-erlangen.de

### Mark E. Schweitzer, MD

Stony Brook University  
Department of Radiology  
US-11794-8460 Stony Brook, NY  
Mark.schweitzer@stonybrookmedicine.edu

### Lynne Steinbach, MD

University of California San Francisco  
Department of Radiology  
US-94143 San Francisco, CA  
lynne.steinbach@ucsf.edu

### Klaus Strobel, MD

Cantonal Hospital Lucerne  
Department of Nuclear Medicine and Radiology  
CH-6000 Lucerne  
klaus.strobel@luks.ch

### Peter J. Strouse, MD

C. S. Mott Children's Hospital  
Section of Pediatric Radiology  
US-48109-4252 Ann Arbor, MI  
pstrouse@umich.edu

### Reto Sutter, MD

University of Zurich  
University Hospital Balgrist  
Radiology Department  
CH-8008 Zurich  
Reto.Sutter@balgrist.ch

## T

### Michael J. Tuite, MD

University of Wisconsin Hospital and Clinics  
Musculoskeletal Division Diagnostic Radiology  
US-53792-3252 Madison, WI  
mjtuite@wisc.edu

## V

### Bruno Vande Berg, MD

University Hospital St. Luc  
Department of Radiology and Medical Imaging  
BE-1200 Brussels  
vandeberg@rdgn.ucl.ac.be

## W

### Christian Weismann, MD

University Institute of Radiology  
Diagnostic and Interventional Breast Department  
AT-5020 Salzburg  
christian.weismann@gmx.at

### Lawrence M. White, MD

University of Toronto  
Joint Department of Medical Imaging  
CA-M5G 2N2 Toronto, ON  
Lawrence.White@uhn.ca

### Karl Wieser, MD

University of Zurich  
University Hospital Balgrist  
Radiology Department  
CH-8008 Zurich  
karl.wieser@balgrist.ch

### David Wilson, MD

St Luke's Hospital  
St Luke's Radiology  
GB-OX3 7PF Headington, Oxford  
david.wilson@msd.ox.ac.uk

### Klaus Woertler, MD

Technical University Munich  
Department of Radiology  
DE-81675 Munich  
klaus.woertler@tum.de

## Z

### Marco Zanetti, MD

Clinic Hirslanden  
Musculoskeletal Radiology Centre  
CH-8032 Zurich  
Marco.Zanetti@hirslanden.ch

## Scientific Program Satellite Courses

### Nuclear Medicine Satellite Course “Diamond”



#### Course Objectives

1. Teach the participants effective approaches in analysing diagnostic imaging challenges in patients with musculoskeletal diseases using Nuclear Medicine imaging techniques
2. Allow participants in guided self study to recognize key imaging features of various diseases
3. Teach participants in which setting which imaging examination is most effective
4. Offer participants to interact with top international experts in the field of musculoskeletal medicine

#### Target audience:

- Nuclear Physicians / Radiologists
- Nuclear Medicine / Radiology residents and fellows
- Interested clinicians, particularly neurologists

#### Workshops

1. **Planar and Tomographic Hybrid Nuclear Imaging of the Spine**  
Torsten Kuwert, DE
2. **Pitfalls in Planar and Hybrid Bone and Joint Imaging**  
Klaus Strobel, CH
3. **PET Imaging of Bone Metastases Using Different Tracers**  
Einat Even-Sapir Weizer, IL
4. **Planar and Tomographic Hybrid Nuclear Imaging of Primary Bone Tumors**  
Frédéric Paycha, FR
5. **Imaging of Joints and Joint Prostheses**  
Anna Hirschmann, CH
6. **Patterns and Signs in Nuclear Bone and Joint Imaging**  
Gopinath Gnanasegaran, GB

IDKD Opening Highlight Lecture on Sunday, March 26, is part of the “Diamond” program. Lecture schedule is on page 12.

### Pediatric Radiology Satellite Course “Kangaroo”



#### Course Objectives

1. Teach the participants effective approaches in analysing diagnostic imaging challenges in pediatric patients with musculoskeletal diseases
2. Allow participants in guided self study to recognize key imaging features of various diseases
3. Teach participants in which settings which imaging examination is most effective
4. Offer participants to interact with top international experts in the field of pediatric musculoskeletal and related imaging

#### Target audience:

- Pediatric radiologists, pediatric radiology residents and fellows
- Radiologists with interest in and/or obligation for pediatric radiology
- Interested clinicians
- Radiology technicians with advanced competences/interests

#### Workshops

1. **Scoliosis or Back Pain in Children: What To Consider**  
Thierry A.G.M. Huisman, USA
2. **Pediatric Bone Marrow Imaging**  
Diego Jaramillo, USA
3. **Infectious and Inflammatory MSK Disorders in Children**  
Peter J. Strouse, USA
4. **Congenital Disorders of the Pediatric Extremities**  
Rutger A.J. Nievelstein, NL

### Breast Imaging Satellite Course “Pearl”



#### Course Objectives

1. Teach the participants effective approaches in analysing diagnostic imaging challenges in breast disease
2. Allow participants in guided self study to recognize key imaging features of various breast diseases
3. Teach participants in which setting which imaging examination is most effective
4. Offer participants to interact with top international experts in the field of breast imaging

#### Target audience:

- Radiologists
- Radiology residents and fellows
- Interested clinicians, especially gynecologists
- Radiology technicians with advanced competences/interests

#### Workshops

1. **High-Risk Multimodality Screening**  
Ulrich Bick, DE
2. **Evolving Indications to Breast MRI**  
Julia Camps Herrero, ES
3. **Principles and Management of Imaging Guided Breast Interventions**  
Christian Weismann, AT
4. **Recent and Future Developments in Breast Imaging**  
Rüdiger Schulz-Wendtland, DE

#### Highlight Lecture

**Overdiagnosis in Breast Cancer Screening – What Can We Do?**  
Ulrich Bick, DE

### Lectures

#### Rüttimann Lecture

This lecture is in memory of the visionary founder of the IDKD Prof. Alois Rüttimann (1922–2011) and aims to address pioneering radiologic, medical topics, or topics of general interest given by specially selected experts.

#### Sunday, March 26, 2017

17.45–18.30

#### Diagnostic Imaging of Ancient Remains: Of Mummies, Skeletons, and the Evolution of Human Diseases

Frank Rühli, CH

### Lectures

#### Sunday, March 26, 2017

09.30–09.45

#### Opening Address

#### Instruction for Course Informatics

09.45–10.30

#### Opening Lecture

#### 1. Osteomyelitis and Septic Arthritis: Basic Mechanisms, Situations, and Morphologic Features

Donald Resnick, USA

#### Monday, March 27, 2017

11.15–12.00

#### 2. Imaging of Malignant Bone Pathology Using Various PET Tracers

Einat Even-Sapir Weizer, IL

#### Tuesday, March 28, 2017

11.15–12.00

#### 3. Bone and Cartilage Injury: Anatomy, Biomechanics, and Patterns of Injury with Emphasis on MR Imaging

Donald Resnick, USA

13.00–13.45

#### 4. Research Developments in Trauma Care, Imaging and Beyond

R. Geoff Richards, CH

#### Wednesday, March 29, 2017

11.15–12.00

#### 5. The Radiologist's Approach to Inflammatory Joint Disease

Marco Zanetti, CH

#### Thursday, March 30, 2017

11.15–12.00

#### 6. The Rheumatologist's Approach to Inflammatory Joint Disease

Oliver Distler, CH

### Special Lectures

#### Monday, March 27, 2017

13.00–15.30

#### 1. Special Topic: Advanced Postoperative Imaging

13.00–13.05

#### Introduction

13.05–13.50

#### 1a. Joint Arthroplasty Made Simple (Focus on Knee and Shoulder)

Karl Wieser, CH

13.50–14.20

#### 1b. CT Artifact Reduction in Postoperative Patients

Roman Guggenberger, CH

14.20–14.50

#### 1c. MR Artifact Reduction in Postoperative Patients

Reto Sutter, CH

14.50–15.20

#### 1d. SPECT-CT in Postoperative Patients

Anna Hirschmann, CH

15.20–15.30

#### Discussion

#### Wednesday, March 29, 2017

13.00–15.30

#### 2. Special Topic: Comprehensive Review of Musculoskeletal Radiology

Guest Organisation: BSSR



B.S.S.R.

13.00–13.10

#### Introduction

13.10–13.40

#### 2a. Diagnostic Ultrasound of the Shoulder

Hassan Douis, GB

13.40–14.10

#### 2b. Ultrasound Guided Injections of the Shoulder

Ian Beggs, GB

14.10–14.40

#### 2c. Ultrasound of the Ankle and Knee

Georgina Allen, GB

14.40–15.10

#### 2d. Ultrasound of Muscle

David Wilson, GB

15.10–15.30

#### 2e. Ultrasound in Comparison to Other Imaging Methods

Georgina Allen, GB



**Tuesday, March 28, 2017**

17.15–19.00

**Moderator**

Donald Resnick, USA

**Panelists**

Suzanne Anderson, CH  
Andrew J. Grainger, GB  
William E. Palmer, USA  
Charles S. Resnik, USA  
David A. Rubin, USA  
Mark E. Schweitzer, USA  
Lynne Steinbach, USA  
David Wilson, GB

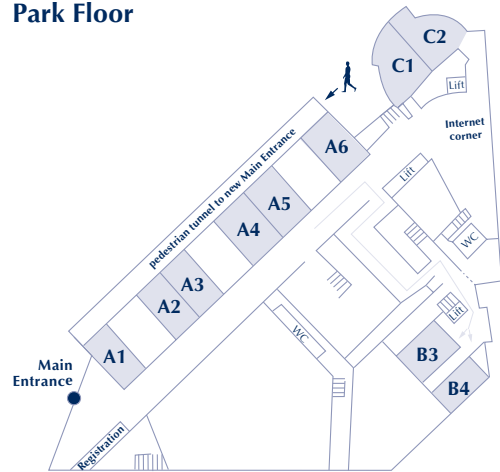
- 1. Shoulder: Instability**  
Ara Kassarian, ES  
Lawrence M. White, CA
- 2. Shoulder: Rotator Cuff**  
Marcelo de Abreu, BR  
Michael Recht, USA
- 3. Elbow**  
Laura W. Bancroft, USA  
Michael J. Tuite, USA
- 4. Wrist and Hand**  
Robert D. Boutin, USA  
Christine Chung, USA
- 5. Hip**  
Mini N. Pathria, USA  
Klaus Woertler, DE
- 6. Pelvis and Groin**  
William E. Palmer, USA  
Christian W.A. Pfirrmann, CH
- 7. Knee**  
Eva Llopis, ES  
Lynne Steinbach, USA
- 8. Ankle and Foot**  
Andrew J. Grainger, GB  
Mario Maas, NL
- 9a. Postoperative Knee**  
Hassan Douis, GB
- 9b. Postoperative Knee and Shoulder**  
Mark E. Schweitzer, USA

- 10. Adult Tumors: Soft Tissue, Bone, Bone Marrow**  
Mark J. Kransdorf, USA  
Mark D. Murphey, USA
- 11. Arthritis**  
Klaus Bohndorf, DE  
Charles S. Resnik, USA
- 12. Metabolic / Endocrine**  
James F. Griffith, HK  
Bruno Vande Berg, BE
- 13. Spine: Trauma**  
Mark W. Anderson, USA  
Suzanne E. Anderson, CH
- 14. Spine: Degeneration and Inflammation**  
Victor Pullicino, GB  
David Wilson, GB
- 15. Infection**  
Apostolos Karantanas, GR  
William B. Morrison, USA
- 16. Ultrasonography: Sports Injuries**  
Ian Beggs, GB  
Jon A. Jacobson, USA
- 17. Muscle Imaging**  
Theodore T. Miller, USA  
David A. Rubin, USA
- 18. Peripheral Nerve Imaging**  
Gustav Andreisek, CH  
Christopher F. Beaulieu, USA

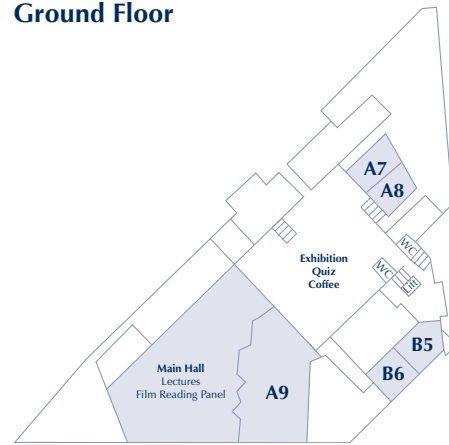
- 19. Primary Bone and Soft Tissue Tumors in Children**  
Diego Jaramillo, USA  
Peter J. Strouse, USA
- 20. Pediatric MSK Trauma: What Is Unique and What Not To Miss**  
Rutger A.J. Nievelstein, NL  
Simon G.F. Robben, NL
- 21. Nuclear Medicine for Radiologists**
  - 21a. Imaging of Joints and Joint Prostheses**  
Anna Hirschmann, CH
  - 21b. Pitfalls in Planar and Hybrid Bone and Joint Imaging**  
Klaus Strobel, CH

# Venue Floor Plan

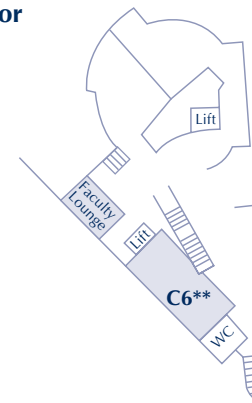
## Park Floor



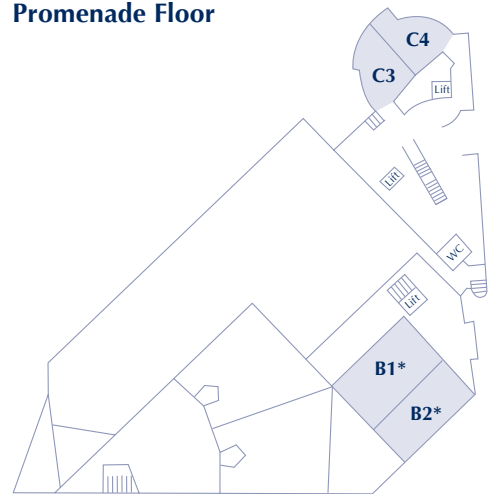
## Ground Floor



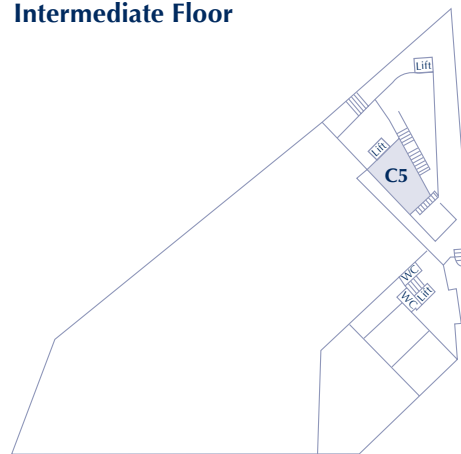
## Upper Floor



## Promenade Floor



## Intermediate Floor



- A1 Dischma
- A2 Flüela
- A3 Sertig
- A4 Schwarzhorn
- A5 Seehorn
- A6 Wisshorn
- A7 Forum
- A8 Studio
- A9 Davos

- B1 Pischa
- B2 Parsenn
- B3 Jakobshorn
- B4 Strela
- B5 Ducan
- B6 Altein

- C1 Sanada I
- C2 Sanada II
- C3 Aspen I
- C4 Aspen II
- C5 Chamonix
- C6 Schiahorn

\* B1 and B2 access via stairs at room B3 (Jakobshorn)

\*\* C6 access from Park floor via the golden elevator opposite room A6





## Program Overview

For topics of Workshops and Lectures please see pages 12–15.

**Exhibition open on Sunday at 9.00–19.30, on Monday to Wednesday at 09.00–19.00 and on Thursday at 9.00–11.30**

**Thieme & Froberg Booksellers' stand open on Tuesday to Thursday**

<b>Sunday</b> March 26, 2017	<b>Monday</b> March 27, 2017	<b>Tuesday</b> March 28, 2017	<b>Wednesday</b> March 29, 2017	<b>Thursday</b> March 30, 2017
09.30–09.45 Opening Address	08.00–09.15 Workshops	08.00–09.15 Workshops	08.00–09.15 Workshops	08.00–09.15 Workshops
Introduction into course organisation and informatics	09.15–09.45 Intermission	09.15–09.45 Intermission	09.15–09.45 Intermission	09.15–09.45 Intermission
09.45–10.30 Highlight Lecture	09.45–11.00 Workshops	09.45–11.00 Workshops	09.45–11.00 Workshops	09.45–11.00 Workshops
10.45–12.00 Workshops	11.15–12.00 Highlight Lecture	11.15–12.00 Highlight Lecture	11.15–12.00 Highlight Lecture	11.15–12.00 Highlight Lecture
12.00–13.00 Lunch	12.00–13.00 Lunch	12.00–13.00 Lunch	12.00–13.00 Lunch	12.00–13.00 Lunch
13.00–14.15 Workshops	13.00–15.30 Special Lecture	13.00–13.45 Highlight Lecture	13.00–15.30 Special Lecture	13.00–14.15 Workshops
14.30–15.45 Workshops	16.00–17.15 Workshops	14.00–15.15 Workshops	16.00–17.15 Workshops	14.30–15.45 Workshops
15.45–16.15 Intermission	17.15–17.45 Intermission	15.15–15.45 Intermission	17.15–17.45 Intermission	
16.15–17.30 Workshops	17.45–19.00 Workshops	15.45–17.00 Workshops	17.45–19.00 Workshops	
17.45–18.30 Rüttimann Lecture		17.15–19.00 Film Reading Panel	19.30–22.00 IDKD Dinner	
18.30–19.30 Welcome Reception				

## Registration Fees

### All prices in Swiss Francs, CHF

Early fee: until January 31, 2017  
 Standard fee: until March 20, 2017  
 Onsite fee: from March 21, 2017

The participants of the IDKD Course and the Satellite Courses receive a Syllabus and access to the IDKD online cases, as well as a certificate of attendance.

Lunches are included in the fees.

	Early fee until January 31, 2017	Standard fee until March 20, 2017
IDKD Course Regular	1.255.–	1.495.–
IDKD Course Resident*	995.–	1.195.–
Nuclear Medicine Satellite Course "Diamond" Regular	400.–	460.–
Nuclear Medicine Satellite Course "Diamond" Resident*	320.–	370.–
Pediatric Radiology Satellite Course "Kangaroo" Regular	300.–	340.–
Pediatric Radiology Satellite Course "Kangaroo" Resident*	240.–	270.–
Breast Imaging Satellite Course "Pearl" Regular	350.–	400.–
Breast Imaging Satellite Course "Pearl" Resident*	280.–	320.–

\* A certificate signed by Head of Department must be sent to the IDKD Office upon registration (fax: +41 43 430 2544 or scanned to info@idkd.org)

### Onsite registration fee from March 21, 2017

IDKD:  
 Standard fee + CHF 100.–  
 Satellite Courses:  
 Standard fee + CHF 50.–



### Payment

Bank: UBS AG  
 Postfach, CH-8098 Zurich  
 Account nr: 251-964156.01A  
 Clearing: 251  
 BIC/Swift Code: UBSWCHZH80A  
 IBAN: CH44 0025 1251 9641 5601 A  
 References: SFAMR  
 Credit Cards: VISA or Eurocard/Mastercard

### Cancellation of Registration

Written notification is required for all cancellations and changes. Refunds are made as follows:

- 80% refund for cancellations received until January 31, 2017
- 50% refund for cancellations received until February 25, 2017
- no refunds thereafter

Same cancellation policy applies to the Satellite Courses.

## Payment – Cancellation

### Cancellation of the IDKD Course

IDKD is entitled to cancel the Courses at any time. Course fees will be reimbursed in case of cancellation of the IDKD Course due to reasons other than war, war-like events, acts of terrorism or epidemics, in which case only a proportionate part would be refundable.

### Confirmation of Registration and Course Badge

Online registrations will be automatically confirmed. Course badges will not be sent out this year; registered participants will receive your personal course badge onsite at the Registration Desk. You will be notified by email about the procedure to pick up your badge closer to the Course.

The badge is personal and is your admission card to the course. **Do not forget it! Do not lose it!** In case of loss, a replacement badge will be provided against an administrative charge of CHF 50.–.

### Disclaimer

The IDKD and the Course Management cannot accept liability for acts of any suppliers to this meeting nor the safety of any attendee while in transit to or from this event nor for any accidents or injuries that may occur. Any liability of IDKD and the Course Management is excluded. All participants are strongly advised to carry sufficient travel and health insurance.

### Applicable Law and Jurisdiction

Swiss law is applicable. The courts of Zurich, Switzerland, shall have exclusive jurisdiction.

**Teaching Hours**

The Course comprises twenty 75-minute workshops and approximately 12 hours of plenary lectures, i. e. a total of 37 hours of teaching.

In addition:

Nuclear Medicine:	8.25 hours
Pediatric Radiology:	5 hours
Breast Imaging:	5.75 hours

Teaching hours can be directly claimed as credits in many countries.

In order to secure the correct attendance record for CME purposes, the participants are required to timely book the sessions they attended online via the IDKD homepage under “My Course Schedule”.

Deadline for submitting the attended sessions is **Sunday, April 2, 2017 midnight.**

**The 49th International Diagnostic Course Davos** is accredited by the European Accreditation Council for Continuing Medical Education (EACCME) to provide the following CME activity for medical specialists. The EACCME is an institution of the European Union of Medical Specialists (UEMS), [www.uems.net](http://www.uems.net).



The 49th International Diagnostic Course Davos is designated for a maximum of **29 hours of European external CME credits**. Each medical specialist should claim only those hours of credit that he/she actually spent in the educational activity. The EACCME credit system is based on 1 ECMEC per hour with a maximum of 3 ECMECs for half a day and 6 ECMECs for a full-day event.

The Swiss Society of Radiology designates the IDKD with 38 category 1 points. European Society of Musculoskeletal Radiology: the course has been accredited with 2 points Cat. 2 for the ESSR Diploma. The Academy for Continuing Medical Education in Radiology designates the IDKD with 29 CME-points, category B.



**Nuclear Medicine Satellite Course “Diamond”**  
The IDKD Nuclear Medicine Satellite Course “Diamond” is accredited by the European Accreditation Council for Continuing Medical Education (EACCME) to provide the following CME activity for medical specialists. The EACCME is an institution of the European Union of Medical Specialists (UEMS), [www.uems.net](http://www.uems.net).

The IDKD Nuclear Medicine Satellite Course “Diamond” is designated for a maximum of **8 hours of European external CME credits**. Each medical specialist should claim only those hours of credit that he/she actually spent in the educational activity.

The Swiss Society of Radiology designates the course with 8 category 1 points. The Swiss Society of Nuclear Medicine designates the course with 10 category 1 points. This event is under the auspices of EANM.



**Pediatric Radiology Satellite Course “Kangaroo”**  
The IDKD Pediatric Radiology Satellite Course “Kangaroo” is accredited by the European Accreditation Council for Continuing Medical Education (EACCME) to provide the following CME activity for medical specialists. The EACCME is an institution of the European Union of Medical Specialists (UEMS), [www.uems.net](http://www.uems.net).

The IDKD Pediatric Radiology Satellite Course “Kangaroo” is designated for a maximum of **6 hours of European external CME credits**. Each medical specialist should claim only those hours of credit that he/she actually spent in the educational activity.

The Swiss Society of Radiology designates the course with 5 category 1 points. The Swiss Society of Pediatric Radiology designates the course with 5 category 1 points.

**Breast Imaging Satellite Course “Pearl”**  
The IDKD Breast Imaging Satellite Course is accredited by the European Accreditation Council for Continuing Medical Education (EACCME) to provide the following CME activity for medical specialists. The EACCME is an institution of the European Union of Medical Specialists (UEMS), [www.uems.net](http://www.uems.net).

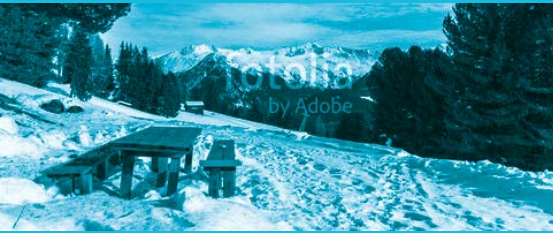
The IDKD Breast Imaging Satellite Course is designated for a maximum of **6 hours of European external CME credits**. Each medical specialist should claim only those hours of credit that he/she actually spent in the educational activity.

The Swiss Society of Radiology designates the course with 6 category 1 points. The Swiss Society of Gynecology and Obstetrics designates the course with 7 points. The Academy for Continuing Medical Education in Radiology designates the IDKD with 6 CME-points, category B.



Through an agreement between the European Union of Medical Specialists and the American Medical Association, physicians may convert EACCME credits to an equivalent number of AMA PRA Category 1 Credits™. Information on the process to convert EACCME credit to AMA credit can be found at [www.ama-assn.org/go/internationalcme](http://www.ama-assn.org/go/internationalcme).

Live educational activities, occurring outside of Canada, recognized by the UEMS-EACCME for ECMEC credits are deemed to be Accredited Group Learning Activities (Section 1) as defined by the Maintenance of Certification Program of The Royal College of Physicians and Surgeons of Canada.



## General Information

---

### Course Management

Foundation for the Advancement of  
Education in Medical Radiology  
Hertistrasse 26  
CH-8304 Wallisellen  
Switzerland  
Phone: +41 43 534 0909  
Fax: +41 43 430 2544  
E-Mail: [info@idkd.org](mailto:info@idkd.org)  
Web: [www.idkd.org](http://www.idkd.org)

### Venue and Local Course Office

Congress Centre Davos  
Talstrasse 49a  
CH-7270 Davos-Platz  
Switzerland

### Opening Hours of the Congress Centre (entrance from Talstrasse)

Saturday, March 25, 2017	08.30–19.00
Sunday, March 26, 2017	07.45–19.30

Monday through Friday always 30 minutes before  
until 30 minutes after the session.

### Starting Times of the Courses

#### Nuclear Medicine / Pediatric Radiology / Breast Imaging

Saturday, March 25, 2017	09.45
--------------------------	-------

#### IDKD Course

Sunday, March 26, 2017	09.30
------------------------	-------

### Lunch

#### Satellite Courses:

Lunch will be served at 13.15–14.00 on  
Saturday only.

#### IDKD Course:

Lunch will be served daily at 12.00–13.00.

### Coffee Breaks

#### Satellite Courses:

Saturday, March 25, 2017	11.30–12.00	15.15–15.45
--------------------------	-------------	-------------

#### IDKD Course:

Free coffee will be served during the first morning  
intermission and during the afternoon intermissi-  
on between the workshops on Monday to Friday.  
On Sunday morning, coffee will not be served.  
On Thursday afternoon, coffee will not be served.

### IDKD on the Internet

Information about IDKD activities is constantly  
updated. Please visit our website at  
[www.idkd.org](http://www.idkd.org).

### Language

English

### Change of Program

Information and times mentioned in this docu-  
ment may be subject to change. Participants are  
requested to check the exact schedule for the  
following day every evening at the notice board.  
Please review updated information on  
[www.idkd.org](http://www.idkd.org).





## Travel Arrangements



Official Carrier

Best booking flexibility with Swiss product and service quality at an attractive discount – offered to you by Swiss International Air Lines as Official Carrier for **IDKD 2017 in Davos**. As the Swiss national airline, we offer all participants **up to 10% discount** on the standard fares. Your stay in Switzerland starts on board our aircraft.

The reduced conference fares are specially marked with a white triangle and, depending on the chosen fare, allow you to change or cancel your flight with complete ease. All reductions depend on the type of fare, route and availability. They are valid on the entire SWISS route network for flights to Switzerland (flight numbers LX1 – 2999 and LX 7400 – 7465), including flights that are operated by our partner airlines under an LX flight number (LX 8000 – 8999). Thanks to the new fare options, you now have even more choice on SWISS European flights, and only pay for what you really need.

The conference fares can be booked now for the travel period 14 days before to 14 days after your event.

In order to benefit from this offer, book your flight easily and without complications through [swiss.com](http://swiss.com) using the following link:  
**[www.swiss.com/event](http://www.swiss.com/event)**.

The event code is sent in the confirmation email to the registered participants.

SWISS looks forward to pampering you on board with typical Swiss hospitality.

### Ground Transportation by train

Train connections every hour between 06.00 and 21.00 from Zurich main station and Zurich Airport to Davos-Dorf.

Schedule: [www.sbb.ch/en](http://www.sbb.ch/en).

### by car

147 km from Zurich

235 km from Basel

304 km from Munich

538 km from Frankfurt am Main

240 km from Milan

In collaboration with the Raetian and Swiss Railways, IDKD organizers are able to offer our participants a discount on train tickets.

- The participants will receive individual promotional codes by email approximately a month before the course. The tickets can be purchased 30 days prior the course start.
- Promotional codes can be redeemed at the online shop from SBB at [www.sbb.ch](http://www.sbb.ch) and save around 25% in 1st or 2nd class.
- Other discounts (eg. Swiss Halb-Tax Abo) can be cumulated.



### Organization

Yela von Schulthess  
Maria Tsiplakova Vögeli

### Welcome Reception

Sunday, March 26, 2017  
18.30–19.30  
Congress Centre

All participants and their guests  
are cordially invited.

### IDKD Dinner

Wednesday, March 29, 2017  
19.30–20.00 Apéritif  
20.00–22.00 Dinner  
Hotel Steigenberger Belvédère  
Price: CHF 95.– (all drinks included)

Limited number of participants.  
Online registration: [www.idkd.org](http://www.idkd.org)



### Tourist Office

Davos Destinations-Organization  
Talstrasse 41  
CH-7270 Davos-Platz, Switzerland  
Phone: +41 81 415 21 21  
Fax: +41 81 415 21 00  
E-Mail: [info@davos.ch](mailto:info@davos.ch)  
Web: [www.davos.ch](http://www.davos.ch)

### Accommodation

Accommodation booking for the IDKD Davos is  
handled by Davos Congress. Hotel reservations at  
specially negotiated rates must be placed online  
at [www.idkd.org](http://www.idkd.org) (IDKD Davos Accommodation).

Headquarter of the course:  
The Grandhotel Steigenberger Belvédère.

### Booking and Cancellation Policy

1. To guarantee your hotel booking your credit  
card number is needed.
2. Payment should be made directly at your  
hotel upon departure.
3. In case of cancellations, your credit card  
details will be forwarded to the hotel.

The cancellation policy for each participant will  
be shown at the accommodation booking  
platform as well as in the confirmation.

Should the participants, for any reason  
whatsoever, need to withdraw from a reservation,  
please refer to the individual cancellation policy  
attached in the hotel confirmation. Generally, the  
following conditions/fees shall apply:

4. Cancellation up to 14 days (or less) prior to  
the booked arrival date results in no fees  
(except for cancellation insurance fees).
5. Cancellation 13 (or less) to 0 days prior to the  
booked arrival date results in the charge of  
100% of the entire booking amount. In case

the room might not be rented out after can-  
cellation, the hotel reserves the right to charge  
up to 100% of the entire booking amount  
(excl. guest taxes and meals) either by bill or  
to charge the credit card directly.

6. “No Show”: In case of no show without prior  
cancellation, the hotel reserves the right to  
charge 100% of the entire booking amount  
to the credit card or to send a bill for the  
respective amount.

### For more information, please contact

Davos Congress  
Phone: +41 81 415 21 63  
Fax: +41 81 415 21 69  
E-Mail: [congress@davos.ch](mailto:congress@davos.ch)

### Bank, Post Office

At the course registration desk, Swiss Francs,  
Eurocard/Mastercard and VISA are accepted.  
Foreign currencies may be changed at one of the  
local banks (Monday–Friday, 08.30–12.00 and  
14.00–17.30). There is an ATM (Bankautomat)  
available 24 hours outside the North entrance of  
the Congress Center on Promenade Floor.

### Car Parking

Participants are advised to observe the official  
parking signs. Course management cannot accept  
responsibility for unauthorized parking. There  
are very limited meter parking facilities in front  
of the main entrance of the Congress Center at  
Talstrasse, therefore we suggest that you park  
your car at your hotel and use public buses free of  
charge. Your hotel guest card will entitle you to  
free bus transportation in Davos.



The organisers are grateful to all companies and persons who helped realise and develop this course through their collaboration and contributions.

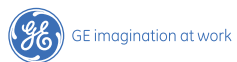
### Main Global Sponsor

Guerbet, Europe



### Key Global Sponsor

GE Healthcare, Europe



### Sponsorship and Advertisements

#### Breast Imaging Course:

Siemens Healthcare AG, Zurich, CH

#### IDKD Course

GE Healthcare, Europe

Guerbet, Europe

Philips AG, Zurich, CH

Thieme & Frohberg GmbH, Berlin, DE

#### Technical Exhibits

##### Nuclear Medicine Course

Theraclion, Malakoff, FR

##### Breast Imaging Course

BARD Medica SA, Oberrieden, CH

Meditrend SA, Grancia, CH

Toshiba Medical AG Schweiz, Volketswil, CH

#### IDKD Course

Bayer (Schweiz) AG, Zurich, CH

Bracco Suisse SA, Manno, CH

GE Healthcare, Glattbrugg/Zurich, CH

Guerbet AG, Zurich, CH

Thieme & Frohberg GmbH, Berlin, DE

Radiolutions AG, Baar, CH

### 2017

IDKD 2017 Asia

#### Diseases of the Chest, Heart and Vascular System

May 26 – 28, 2017, Hong Kong

June 2 – 4, 2017, Beijing, China

IDKD 2017 South America

#### Diseases of the Abdomen and Pelvis

September 21 – 24, 2017

Sao Paulo, Brazil

IDKD 2017 Greece

#### Diseases of the Brain, Head and Neck, Spine

September 29 – October 1, 2017

Athens, Greece

### 2018

IDKD 2018 Davos

#### Diseases of the Abdomen and Pelvis

March 25 – 29, 2018

Visit the IDKD website at [www.idkd.org](http://www.idkd.org) for updated information.



## Diseases of the Chest, Heart and Vascular System

### 心脏、血管系统及胸部疾病

May 26 – 28, 2017, Hong Kong, China  
June 2 – 4, 2017, Beijing, China

2017年5月26–28日，中国 香港  
2017年6月2–4日，中国 北京

An Interactive Course in Diagnostic Imaging – 影像诊断互动课程  
[www.idkd.org](http://www.idkd.org)



**2nd IDKD Intensive Course in South America –  
 Il Curso Intensivo IDKD na América do Sul  
 Excellence in Teaching – Excelência em Ensino**



**10th IDKD Intensive Course in Greece  
 Excellence in Teaching**



## **Diseases of the Abdomen and Pelvis – Doenças do Abdome e Pelve**

**September 21 – 24, 2017  
 Sao Paulo, Brazil**

**21 a 24 de setembro de 2017  
 São Paulo, Brasil**

In collaboration with University of Sao Paulo –  
 Em colaboração com a Universidade de São Paulo

**An Interactive Course in Diagnostic Imaging –  
 Curso Interativo em Diagnóstico por Imagem**

[www.idkd.org](http://www.idkd.org)

## **Diseases of the Brain, Head and Neck, Spine**

**September 29 – October 1, 2017  
 Athens, Greece**

**An Interactive Course in Diagnostic Imaging**

[www.idkd.org](http://www.idkd.org)

# DOTAREM<sup>®</sup>

Gadoteric acid

## NO COMPROMISE in THE DOTAREM WORLD



### Excellent Safety & Optimal Diagnostic Performance

DOTAREM 0.5 mmol/ml, solution for injection. **Composition:** For 100 mL of solution: active ingredient: Gadoteric Acid 27.932 g corresponding to DOTA 20.246 g corresponding to gadolinium oxide 9.062 g. **Indications (\*)**: Medical product for diagnostic use only. Magnetic Resonance Imaging for cerebral and spinal disease, diseases of the vertebral column and other whole-body pathologies (including angiography). **Posology and method of administration:** The recommended dose is 0.1 mmol/kg, i.e. 0.2 mL/kg in adults and children. In angiography, depending on the results of the examination being performed, a second injection may be administered during the same session if necessary. Angiography with Gadoteric acid is not recommended in children (0-18 years). In Encephalic and spinal MRI, in some exceptional cases, as in the confirmation of isolated metastases or the detection of leptomeningeal tumours, a second injection of 0.2 mmol/kg may improve tumour characterisation and facilitate therapeutic decision making. For patients with impaired renal function and paediatric population (0-18 years) more than one dose should not be used during a scan, injections should not be repeated unless the interval between injections is at least 7 days. The product must be administered by strict intravenous injection. Depending on the amount of gadoteric acid to be given to the child, it is preferable to use gadoteric acid vials with a single use syringe of a volume adapted to this amount in order to have a better precision of the injected volume. In neonates and infants the required dose should be administered by hand. **Contraindications:** Hypersensitivity to gadoteric acid, to meglumine or to any medicinal products containing gadolinium. **Special warnings and precautions for use:** Dotarem must not be administered by subarachnoid (or epidural) injection. The usual precaution measures for MRI examination should be taken such as exclusion of patients with pacemakers, ferromagnetic vascular clips, infusion pumps, nerve stimulators, cochlear implants or suspected intracorporeal metallic foreign bodies, particularly in the eye. **General precautions corresponding to all gadolinium contrast agents:** All gadolinium based contrast media can cause minor or major hypersensitivity reactions that can be life-threatening. These can occur immediately (within 60 minutes) or be delayed (within 7 days) and are often unpredictable. Because of the risk of major reactions, emergency resuscitation equipment should be available for immediate use. Hypersensitivity reactions can be aggravated in patients on beta-blockers and particularly in the presence of bronchial asthma. These patients may be relatively refractory to standard treatment of hypersensitivity reactions with beta agonists. Impaired renal function: Prior to administration of gadoteric acid, it is recommended that all patients are screened for renal dysfunction by obtaining laboratory tests. There have been reports of Nephrogenic Systemic Fibrosis (NSF) associated with use of some gadolinium-containing contrast agents in patients with severe renal impairment (GFR < 30 mL/min/1.73 m<sup>2</sup>). As there is a possibility that NSF may occur with Dotarem, it should only be used in these patients after careful consideration. CNS disorders: As with other contrast agents containing gadolinium, special precautions should be taken in patients with a low seizure threshold. Precautionary measures, e.g. close monitoring, should be taken. All equipment and drugs necessary to counter any convulsions which may occur must be made ready for use beforehand. **Interactions with other medicinal products and other forms of interaction:** No interactions with other medicinal products have been observed. Formal drug interaction studies have not been carried out. Fertility, pregnancy and

lactation: Gadoteric acid should not be used during pregnancy unless the clinical condition of the woman requires use of gadoteric acid. Continuing or discontinuing breast feeding for a period of 24 hours after administration of gadoteric acid, should be at the discretion of the doctor and lactating mother. Effects on ability to drive and use machines: No studies on the effects on the ability to drive and use machines have been performed. Ambulant patients while driving vehicles or operating machinery should take into account that nausea may incidentally occur. **Undesirable effects:** Uncommon (>1/1000 to <1/100): hypersensitivity, headache, dyspnoea, dizziness, somnolence, paraesthesia (including burning sensation), hypertension, hypotension, nausea, abdominal pain, rash, feeling hot, feeling cold, asthma, injection site reactions (extravasation, pain, discomfort, oedema, inflammation, coldness). Rare (>1/10 000 to <1/1 000): anxiety, pnyseopoe, eyelid edema, palpitations, sneezing, throat tightness, vomiting, dizziness, salivary hyperscretion, Urticaria, pruritus, hyperhidrosis, chest pain, chills. Very rare (<1/10 000): anaphylactic reaction, anaphylactoid reaction, agitation, coma, convulsion, syncope, hemo, paresthesia, conjunctivitis, ocular hyperaemia, vision blurred, lacrimation increased, tachycardia, cardiac arrest, arrhythmia, bradycardia, flushing, pallor, vasodilatation, hot flush, cough, dyspnoea, nasal congestion, respiratory arrest, bronchospasm, throat irritation, laryngospasm, pharyngeal oedema, dry throat, pulmonary oedema, erythema, angioedema, eczema, muscle cramps, muscular weakness, back pain, arthralgia, malaise, chest discomfort, pyrexia, face oedema, injection site necrosis (in case of extravasation), phlebitis superficial, decreased oxygen saturation. Not known: nephrogenic systemic fibrosis. **Overdose:** Gadoteric acid can be removed by haemodialysis. However there is no evidence that haemodialysis is suitable for prevention of nephrogenic systemic fibrosis. **Please note:** The peel-off tracking label on the vials or syringes should be stuck onto the patient record to enable accurate recording of the gadolinium contrast agent used. The dose used should also be recorded. If electronic patient records are used, the name of the product, the batch number and the dose should be entered into the patient record. **Pharmacological properties:** Pharmacotherapeutic group: paramagnetic contrast media for MRI, ATC code: V08CA02. Presentation (\*): 5, 10, 15, 20, 60 & 100 mL in vial (glass) and 10, 15 & 20 mL in a pre-filled syringe (glass). Marketing authorization holder: (\*) Informations: Guerbet BP 37400 - F-95943 Bossy Cedex - FRANCE. Tel. 33 (0) 1 45 91 50 00. Date of revision of this document: September 2016.

For current and complete prescribing information refer to the package insert and/or contact your local Guerbet organization. (\*) Indications, presentations and marketing authorization holder may differ from country to country.

Reporting of suspected adverse reactions is important as it helps to continuously assess the benefit-risk balance. Therefore, Guerbet encourages you to report any adverse reactions to your health authorities or to your local Guerbet representative.

Guerbet |   
Contrast for Life



The more you have to think about the diagnosis of your patient, the less you want to worry about your contrast agent



PREPARED TO PROTECT

ISOSMOLAR  
**VISIPAQUE™**  
(IODIXANOL)

#### Gekürzte Fachinformation VISIPAQUE™ (Iodixanolol)

**Indikationen:** Erw.: Röntgenkontrastmittel für die Kardioangiographie, zerebrale Angiographie periphere Arteriographie, Abdominalangiographie, Urographie, Venographie und zur Kontrastverstärkung bei Computertomographie (CT-Kopf, CT-Körper) und zur lumbalen, thorakalen und zervikalen Myelographie. Arthrographie, Hysterosalpingographie und Untersuchungen des GI Traktes. **Kinder:** Kardioangiographie, intravenöse Anwendung zur Urographie, Kontrastverstärkung bei der Computertomographie (CT-Kopf, CT-Körper). Untersuchungen des GI Traktes (auch als Enema).

**Dosis/Anwendung:** Die Dosierung kann je nach der Art der Untersuchung, dem Alter, Gewicht, dem Herzminutenvolumen und dem Allgemeinzustand des Patienten variieren. Normalerweise werden dieselben Iodkonzentrationen und Volumina eingesetzt wie mit anderen gebräuchlichen iodhaltigen Röntgenkontrastmitteln.

Aber auch mit etwas geringerer Iodkonzentration wurden in einigen Studien mit Iodixanolinjektionen gute diagnostische Resultate erhalten. **Kontraindikationen:** Schwerwiegende Überempfindlichkeitsreaktionen nach Gaben von Visipaque oder dessen Bestandteile in der Anamnese, manifeste Thyreotoxikose. Während der Schwangerschaft oder bei akuter Entzündung im Beckenbereich ist eine Hysterosalpingographie kontraindiziert. **Warnhinweise/Vorsichtsmassnahmen:** Bei bekannter Allergie, Asthma oder schwer behandelbaren Reaktionen gegen iodhaltige Kontrastmittel ist besondere Vorsicht geboten. Hier sollte eine Vorbehandlung mit Kortikosteroiden, und/oder Antihistaminika in Betracht gezogen werden. Bei Anwendung iodhaltiger Kontrastmittel können anaphylaktoide Reaktionen mit unter Umständen lebensbedrohlichen kardiovaskulären (Schock) oder respiratorischen (Larynxödem, Bronchospasmus), sowie Abdominalsymptomen, Urtikaria, Angioödem oder neurologischen Symptomen auftreten und andere Manifestationen einer Überempfindlichkeit verursachen. Bei Patienten, die mit Betablockern behandelt werden, können untypische Symptome von Überempfindlichkeitsreaktionen auftreten, die als vagale Reaktion missinterpretiert werden können. **Interaktionen:** Der Einsatz iodhaltiger Kontrastmittel kann

eine vorübergehende Einschränkung der Nierenfunktion zur Folge haben. Dies kann bei Diabetikern, die Metformin einnehmen, eine Laktatazidose auslösen. Patienten, die weniger als 2 Wochen vor der Injektion mit iodierten Kontrastmitteln Interleukin-2 erhalten haben, weisen ein erhöhtes Risiko für Spätreaktionen auf. Es gibt Hinweise, dass die Einnahme von Betablockern ein Risikofaktor für Überempfindlichkeitsreaktionen/anaphylaktoide Reaktionen auf das Kontrastmittel, wie schwerwiegender Blutdruckabfall darstellt. **Schwangerschaft/Stillzeit:** Da in der Schwangerschaft eine Strahlenbelastung ohnehin vermieden werden soll, sollte eine Röntgenuntersuchung in der Schwangerschaft nicht erfolgen, es sei denn, dies ist klar notwendig. In solchen Fällen ist die Thyroid-Funktion des Neugeborenen zu kontrollieren. Iodhaltige Kontrastmittel werden zu einem geringen Umfang in die Muttermilch ausgeschieden und minime Mengen werden über den Gastrointestinaltrakt absorbiert. Das Stillen kann normal fortgesetzt werden, wenn der Mutter iodhaltige Kontrastmittel verabreicht werden. **Unerwünschte Wirkungen:** **Intravasculäre Anwendung:** Überempfindlichkeitsreaktionen, Kopfschmerzen, Hitzewallungen, Übelkeit, Erbrechen, Hautausschlag, Pruritus, Urtikaria, Hitzegefühl, Brustschmerz. **Intrathekale Anwendung:** Kopfschmerz, Erbrechen. **Anwendung in Körperhöhlen:** Kopfschmerz, Schmerzen im unteren Abdomen, Übelkeit, Fieber. **Arthrographie:** Schmerzen an der Einstichstelle. **Untersuchungen des GI-Traktes:** Diarrhoe, Abdominalschmerzen, Übelkeit. **Packung:** Visipaque 270 und 320: 1 x 20 ml, 10 x 20 ml, 1 x 50 ml, 10 x 50 ml, 1 x 100 ml, 10 x 100 ml, 1 x 200 ml, 1 x 500 ml, 6 x 500 ml. Abgabekategorie (B). **Stand der Information:** Juni 2015. Weitere Informationen siehe [www.swissmedinfo.ch](http://www.swissmedinfo.ch). GE Healthcare AG, 8152 Glattbrugg

© 2017 General Electric Company. GE, das GE Monogram VISIPAQUE™ sind Warenzeichen der General Electric Company.

01-2017 JB45857CH/OS IDKD-17

# Now's our time to inspire the future of healthcare together.

Engineering success.  
Pioneering healthcare.



## PHILIPS

# Certainty lives in layers

### Philips IQon Spectral CT

As the world's first spectral detector-based CT, the Philips IQon Spectral CT delivers multiple layers of retrospective data in a single scan and seamlessly integrates into existing hospital system protocols. Taking you from doubt to certainty. To seeing. To solutions.

innovation  you



**In Switzerland  
they speak  
four languages.**

**But only one  
when it comes  
to quality.**

**SWISS is proud to support  
the 49th IDKD as official airline.**